



BELL PARK NORTH PRIMARY SCHOOL

NEWSLETTER #1, Monday 5th February 2024

Principal:

Anthea Lagadinos



Assistant Principal:

Christopher Cox



TERM 1

Whole School Assembly
Friday 9th Feb, 2:10pm
Then occurring every Friday

Parent Information Sessions
Monday 12th Feb to
Wednesday 14th Feb,
3:30—4:40pm

Robotics
Tuesday 20th Feb to
Friday 23rd Feb

Family Fun Night
Wednesday 21st Feb
3:30pm—5:00pm

Lightning Premiership Grade 5/6
Monday 26th February

Labour Day Holiday
Monday 11th March

NAPLAN
13th March to 21st March
Grades 3 & 5

Easter Hat Parade
Thursday 28th March, 9am

Last Day Term 1
Thursday 28th March
Finish 2:10pm

FROM THE PRINCIPAL.....

Dear Parent / Carers,

Welcome to the 2024 school year everyone. We hope all of our families have enjoyed a safe and relaxing holiday. We have enjoyed a pleasing start to the school year with children starting back with great enthusiasm as have our staff members. The start for our Foundation children was also very smooth and exciting.

This week the children and teachers will continue be involved in the Bell Park North Start Right Stay Right Program. During this time each class learns about school expectations, school values, how to build positive relationships and get to know members in their class.

As parents there may be times when you need to ask questions, discuss concerns or share information. You are always welcome and encouraged to make an appointment to see me, our Assistant Principal Mr Cox or your child's teacher. There is no issue which cannot be worked out together.

On behalf of the staff I express that we are all looking forward to a great year with our families.



Welcome

To all of our staff and families who are new to the school we extend a very big welcome and wish you all the very best during your time at Bell Park North P.S. We look forward to getting to know all of you.

Congratulations to our School Student Leaders for 2024

The following students hold leadership roles for this year. We would like to congratulate these children and look forward to their contributions to our school during the year.



SCHOOL STUDENT LEADERS 2024

School Captains: Josh McKay and Rhianna Serasinghage Don

Vice Captains: Kanishk Mandhan and Anja Budimir

Briggs House Captains: Zach McKinnin and Heidi celik

Vice Captains: Skylar Payne-Gumbleton and Logan Isaacs

Rowan House Captains: Jayson Stannard and Kaijan-Lee Luhr Harrison

Vice Captains: Ava Veitenheimer and Hamish Ashwin-Carter

Vessey House Captains: Harper Allan and Billie Strattan

Vice Captains: Mason Whitney and Mason Berry

We will present leadership badges as soon as they arrive. Parents will be given notice of this.

Term 1 Value

"Friendship"

School Council President:

Rebecca Hunt

PO Box 244 North Geelong 3215

Ph. 5278 3548 Fax 5278 4418

www.bpnps.vic.gov.au

bell.park.north.ps@education.vic.gov.au

Bell Park North Primary School F-6

Vision Statement

Our Vision: "Together We Achieve"

At Bell Park North Primary School, our staff, children and parents work together to support the social, emotional and academic learning of all students in our care.



Our Values

Values which form the basis of our actions are:

Friendship

Respect
Integrity
Equality
Never Give Up
Do Your Best
Safety

Newsletter Publishing Day

Our school newsletter will be posted on our COMPASS portal every second Monday. Any communication to parents at other times will be posted in COMPASS as necessary.



Value For This Term

The school value we are looking at this term is **'Friendship'** Teachers will be talking to children about what Friendship means and how to demonstrate it. You are able to support this work by talking to your children about the following at home:

- **kindness, care, forgiveness**
- **trust**
- **peer support**
- **buddies**
- **team work**
- **community relationships**



Hot Weather



This term we are sure to experience some hot days. I urge all parents to ensure children are dressed appropriately in the summer uniform and to apply sunscreen on their children and this can be sent along in their bags for reapplication if children are able to do this themselves. Unfortunately teachers are not allowed to apply this on children. Also remember to send along a filled water bottle which can be placed on the child's desk for drinking throughout the day. Water is only allowed in this but a healthy drink of choice can be sent along for break times. As we are a Healthy Eating School, soft drinks are not permitted.

Please rest assured that in cases of extreme heat, children will not be outside in the playground but will spend break times within their classrooms which are either airconditioned or acclimatized with fans as in the infant building.

Hats

As we are an accredited Sunsmart School, children are expected to wear a broad rimmed hat when playing outside. If children do not have a hat will not be playing in the grounds and they will be made to sit in the shelter shed. Hats are available from Bellarine Uniforms.



Uniform and Homework

Copies of the School Council approved Uniform and Homework policies have been included in this issue of the newsletter. Please familiarise yourselves and your children with our school expectations. We appreciate your support with this.

***Every child is expected to be wearing the approved uniform which can only be purchased at Bellarine Uniforms in Moorabool St. No variations or items purchased from other stores are allowed except for the approved navy pants and shorts from Target.**



Wellbeing and Engagement



Bell Park North Primary School has developed a range of strategies to promote engagement, an inclusive and safe environment, positive behaviour, and respectful relationships for all students in our school. We recognise the importance of student friendships and peer support in helping children and students feel safe and less isolated. We acknowledge that some students may need extra social, emotional or educational support at school, and that the needs of students will change over time as they grow and learn. The school works collaboratively with students and parents/carers to establish fair and respectful behaviour policies and practices, based on the school's values, expected social competencies and positive peer relationships. There are also intervention strategies in place to address inappropriate behaviours which can negatively impact on the learning environment of the self and others. A copy of our school's Wellbeing and Engagement Policy is available upon request.

Student Accident Insurance Arrangements

I would like to remind parents that the Education Department does not provide personal accident insurance for students. Parents/guardians are responsible for paying the cost of medical treatment for injured students, including any transport costs. Reasonably low cost accident insurance policies are available from commercial insurers.

Please note that if a child does have an accident and the school feel an ambulance should be called, it will be regardless of whether parents have ambulance insurance or not. Parents will be responsible for the cost of the ambulance.

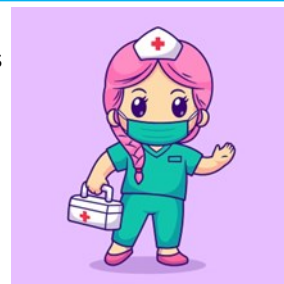


School Nursing Program

The Primary School Nurse from the Primary School Nursing Program will be visiting our school this term to:

- Assess all Foundation children with parental consent and other children referred to the school nurse in Grades 1-6
- Assess children who have newly arrived from overseas
- Follow up with children where school nurse intervention was previously required
- Provide advice and health information

The School Entrant Health Questionnaire will be available online to all Foundation parents and it would be appreciated if you could please complete this as soon as possible. (The questionnaire provides parents/guardians with the opportunity to raise any concerns with the school nurse they may have about their child's health and development.)

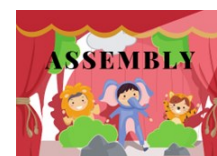


School Council Vacancies

We have presently got 5 x 2 year parent positions and 1x 1 year parent position vacancies for this year's School Council. The information for this process has been included in this newsletter. Nominations for these vacancies close on **Monday 12th February**. Forms are available from our school office. We hope that those parents already on council will renominate and some of you may consider joining us on council.

Assembly

This term we will hold our school assemblies in the school gym at 2:10 p.m. each Friday to ensure our Foundation students can attend. All parents are welcome to come along. Our first assembly will be held this Friday 9th February.



Being COVID-Safe

The Department of Health **strongly recommends** that students and school staff:

- who test positive to COVID-19 stay home and isolate for 5 days and do not attend school after 5 days if they are still symptomatic
- who are symptomatic but have not tested positive not attend school. This does not include students with pre-existing conditions such as hay fever.

Parents and carers are recommended to continue to report their child having COVID-19 to both the school and the Department of Health.

We will, however, no longer report occurrences of positive cases to the school community. We ask parents and carers to continue to remain vigilant in preventing COVID-19 transmission. Any student who is unwell should continue to remain at home. This is about keeping students healthy and well in our school and reducing the spread of both COVID-19 and other respiratory diseases.

Parents and carers will be contacted if their child shows symptoms while at school. Students who wish to wear a mask should continue to do so. To keep our school as safe as possible, we will also continue to use air purifiers and other COVID-19 prevention measures.

We appreciate and thank you for your continued efforts to keep our school community safe and well.

Anthea Lagadinos
Principal

Friendly Reminders:

- Newsletters will be posted in COMPASS every second Monday.
- Full school uniform must be worn every day.
- Children must wear hats between the months of September and May or when the UV index is 3 or above.
- It's Not Okay to Be Away or Late to School as "Every Day Counts"



Welfare Corner



What does the School Welfare Officer Do?

As we are at the start of a new school year, I thought it would be an ideal time to let you know what my role is, within our school community.

I am at school Monday – Friday. The children call me by my first name as I am not a teacher but a support person for the children and for you.

My role involves working with students, their families and the staff at Bell Park North Primary School, as well as other professionals within the wider community. I offer support to teaching staff when required, to help them provide your child with the best education experience they can have.

In my role, I offer one-on-one work with students or small group work with students, where there is a similar issue or concern.

These issues can include, social skills, friendship, grief, and loss, behavioural, anger issues, bullying, family issues, emotional issues, support with self-regulation, fears, anxiety, school issues, trauma issues and mental health issues or any other issue that affects your child's wellbeing.

I am available to support parents, if you have any concerns or issues that relate to your child. You can either come and see me or phone me at school if you need to discuss any issues or concerns you may have. However, if you need more than a few minutes I suggest you make an appointment so I can give you the time you need to talk about your concern or issue.

I am available to work with all children within our school community.

Some children just need someone to talk to; this often helps to make school a good place for learning. Some children just need some time out of the classroom to manage their feelings. There are also times when the playground becomes difficult for a child and they need some support to manage this.

Other areas I oversee, is our SEAL program, which is our **S**ocial **E**motional **A**wareness **L**earning, this program incorporates Respectful Relationships, Zones of Regulation and The Resilience Project, so your children receive a holistic wellbeing program, to assist with building their social and emotional skills, you will hear more about the SEAL program in our newsletter, watch out for 'Swimming with SEAL'. I also oversee Be You which is a mental health initiative funded by the Government, it is a framework to assist schools to provide appropriate care and support for children who are having issues with their mental health.

Welfare Corner will be a regular feature in our newsletter. This will feature various welfare related information, so keep an eye out for it. There will also from time to time be some information from The Resilience Project, so keep an eye out for this.

Please feel free to make contact and have a chat or make a time to discuss any concerns or issues with me so we can work together to support your child /ren to have a good year at school.

I look forward to supporting you and your child/ren this year at school.

Rosalie Scott - Welfare Officer





Swimming with SEAL

(Social Emotional Awareness Learning)



Our SEAL program commences in Week 3 of this term. We will begin SEAL with 'Resilience, Rights and Respectful Relationships'

Term 1:

Week 3 & 4 - Emotional Literacy

TOPIC 1: Emotional literacy can be defined as the ability to understand ourselves and other people. It includes the ability to understand, express and manage our own emotions, build empathy, and to respond appropriately to the emotions of others. Building a large vocabulary for emotions helps to increase emotional literacy and build self-awareness and empathy for others. (Resilience, Rights and Respectful Relationships)

All year levels will be covering the same topic, with age appropriate lesson and activities.

Please talk with your child/ren about what they are doing in SEAL.

Each classroom has their own soft toy seal, ask your child about their classroom seal.

Week 5 -9 our SEAL program will take a break and our school will be doing Peer Support. We will resume our SEAL program in Term 2.



UNIFORM POLICY

BELL PARK NORTH PRIMARY SCHOOL

School Council, in consultation with the School Community has introduced a student dress code for the compulsory wearing of school uniform. This dress code has been in place for several years. All parents are made aware of uniform requirements when they enrol their children.

Parents are requested to ensure that their children wear the school uniform that is correct and is kept in a clean and tidy condition. Variations to school uniform are not permitted unless evidence is provided on medical or religious conditions.

AT BELL PARK NORTH PRIMARY SCHOOL THE STUDENT DRESS CODE WILL:

- Promote and encourage a sense of belonging, identification and pride in our school.
- Assist with student safety and group security.
- Eliminate competitive dressing and unnecessary peer group pressure.
- Provide a neat and practical style of dress.
- Ensure new students are integrated easily and smoothly.

GUIDELINES

1. The Bell Park North Primary School Dress Code shall apply to all students while they are at school, travelling to and from school and on all school related activities unless otherwise specified by the school.
2. The school uniform must be worn correctly, in accordance with this policy. Parents should purchase only the listed, approved items from our school approved supplier. Children who are not wearing school uniform, or are wearing items of clothing that are not approved, will receive an 'Out of Uniform' note.
3. The approved uniform supplier will be Noone Imagewear (Bellarine Uniforms; 162 Moorabool Street Geelong).
4. Thongs, open-toe sandals, scuffs, ugg boots, gum boots and platform soles are not acceptable footwear. Shoes must be secured on children's feet at all times.
5. The Principal or delegate shall be responsible for ensuring that clothing, jewellery, footwear, sunhats; etc meets appropriate standards in regard to student safety and overall student presentation and appearance, in line with this policy. This will include ensuring that dress is appropriate on casual dress days e.g. no singlet tops exposing shoulders, shorts and dresses not to be too short.
6. Parents / Guardians are responsible for ensuring their child/children are dressed in school uniform.
7. When a Parent/Guardian can demonstrate significant economic hardship that prevents him/her from complying with the dress code they can make application for special funds from the Principal.
8. SunSmart broad-brimmed sunhats in the school colour are to be worn outside at all times from 1st September-1st May each year. In order to comply with SunSmart regulations for the rest of the year, children should have their hats available; as they will be required to wear them when the UV levels are above 3, regardless of the month.
9. For safety reasons no jewellery is to be worn, with the exception of: a watch, sleeper or stud earrings in the ear only. Children will be asked to remove excessive and/or unsafe jewellery with exception to religion.
10. Make up and coloured nail polish is not to be worn. A clear nail polish is acceptable.
11. Colouring of students' hair is an acceptable practice as long as the colour is of a natural shade. In the event that hair is coloured an unacceptable shade then the parent/guardian will be called to collect the child and re-colour the hair to an acceptable colour.
12. Hairstyles of an extreme style are not acceptable. Examples of extreme hairstyles include shaved stripes, Mohawk or similar styles.

School Name / Department		Policy name		Policy Ref. Number	
Bell Park North Primary School		Uniform Policy			
Owner:	Approved by:	Date:		Version	Page 3 of 3
Bell Park North Primary School	Staff	28/01/2020		1.0	

13. The Principal or the designated delegate will be responsible for determining acceptable standards in relation to hair colour and style.
14. All students' hair, boys and girls, that is of shoulder length or longer must be tied back and off the face for health and safety reasons.
15. Hair bands and ribbons should be white, navy blue or royal blue. No large ornaments such as flowers and scarves are acceptable. Jojo bows are acceptable providing they are white, navy or royal blue.
16. Jackets and raincoats are to be worn only in outdoor areas, and need to be removed once the student enters the school building.
17. Long sleeve t-shirts are not to be worn under school polo shirts.
18. Tracksuit pants or leggings are not to be worn under dresses/kilts.
19. Tights are not to be worn with Summer dresses.
20. Sports knickers or bike shorts may be worn under summer dresses. They should not be visible when standing. Boxer shorts are not acceptable under dresses and should not be visible under boys' shorts. Other underwear should not be visible at any time.
21. Any approved item of clothing may be worn at any time of the year regardless of whether it is on the 'summer' or 'winter' list.
22. All items of uniform, including bags and hats, must be clearly named with a permanent marker or iron labels.
23. All students are required to wear the approved School Uniform which is defined as:

Summer Uniform

•Polo Shirt-Short sleeve	Royal Blue/Navy with logo
•Polo Shirt-long sleeve	Royal Blue/Navy with logo
•Shorts	Navy Blue (Gabardine, elastic waist)
•Trousers	Navy Blue Stubbies (Gabardine, elastic waist)
•Culottes	Navy Blue
•School Dress	Blue/White stripe
•Socks	White sports socks or anklets
•Shoes	Black school shoes or runners
•Hat	Royal Blue broad-brimmed with logo
•1/2 Zip Windcheater	Royal Blue/Navy with logo
•Full Zip Windcheater (Bomber Jacket)	Royal Blue/Navy with logo

Winter Uniform

•1/2 Zip Windcheater	Royal Blue/Navy with logo
•Full Zip Windcheater (Bomber Jacket)	Royal Blue/Navy with logo
•Track Pants	Navy Blue with reinforced knee
•Trousers	Navy Blue Stubbies (NOT cargo)
•Polo Shirt-Short sleeve	Royal Blue/Navy with logo
•Polo Shirt-long sleeve	Royal Blue/Navy with logo
•Kilt/Pinafore	Navy/royal/white check
•Socks	White sports socks or anklets (or black/navy socks under trousers)
•Tights (with kilt only)	Navy
•Shoes	Black school shoes or runners
•Coat	Navy, polar fleece lining with Logo (optional)
•Hat	Royal Blue broad-brimmed with logo

Uniforms are available for sale at:

BELLARINE UNIFORMS
162 Moorabool Street
Geelong 3220

School Name / Department		Policy name		Policy Ref. Number	
Bell Park North Primary School		Uniform Policy			
Owner:	Approved by:	Date:	Version	Page 3 of 3	
Bell Park North Primary School	Staff	28/01/2020	1.0		



HOMework POLICY

BELL PARK NORTH PRIMARY SCHOOL

RATIONALE:

Bell Park North Primary School recognises the Department of Education and Training (DET) guidelines for homework which states, 'as part of a comprehensive and balanced curriculum within Victorian schools, homework is seen as one way of supporting and fostering life-long learning and connecting families with the learning of their children.'

The setting of homework needs to take into consideration the need for students to have a balanced lifestyle. This includes sufficient time for family, sport and recreation and cultural pursuits.

The following link provides more detail on the Department's homework policy:

<https://www2.education.vic.gov.au/pal/homework/policy>

Homework helps students by:

- complementing and reinforcing classroom learning
- fostering good lifelong learning and study habits
- providing an opportunity for students to become responsible for their own learning
- developing self-regulation processes such as goal-setting, self-efficacy, self-reflection and time management
- supporting partnerships with parents by connecting families with the learning of their children

At Bell Park North Primary School Homework should be:

- appropriate to the student's skill level and age
- purposeful, meaningful and relevant to the curriculum
- interesting, challenging and where appropriate, open ended
- used for conversations and feedback about further learning opportunities
- balanced with a range of recreational, family and cultural activities

GUIDELINES:

Teachers are encouraged to exercise their discretion in assigning tasks that are appropriate and meaningful for their students. The school encourages parents and students to work together in ways that support homework tasks and this will vary depending on the level of the student and the type of task.

Homework is a shared responsibility between the school, teachers, students and their parents/carers. In order to get the most out of homework tasks, it is important that everyone understands their obligations and responsibilities.

Shared expectations and responsibilities

Area Teams collaborate at the beginning of each year to develop a common approach to homework within their area that is informed by the School and Department Homework Policies. This will be communicated to families at the start of the school year.

School Name / Department Bell Park North Primary School		Policy name Homework Policy		Policy Ref. Number	
Owner: Bell Park North Primary School	Approved by: School Council		Date: 14/06/2022	Version 1.0	Page 1 of 2

The table below provides a summary of homework at the two key stages of schooling during the primary years.

Years	Homework
Foundation to Year 4	<ul style="list-style-type: none"> • Practise and consolidate the concepts that have been introduced during class time. Skills can foster a sense of self-discipline and responsibility and prepare students for upper grades • Enables the concepts explored in class to be extended and encourage students to use their initiative by gathering additional information or materials. • Will mainly consist of daily reading to, with, and by parents/carers or older siblings. • Students are generally not expected to complete more than 30 minutes of homework per day and no homework tasks will be set over the weekends or during the holidays.
Year 5 to 6	<ul style="list-style-type: none"> • Build on the concepts of self-discipline, responsibility and initiative to prepare students for secondary school. • Will include daily independent reading and may include extension assignments, class work, essays and research. • Students are generally not expected to spend more than 45 minutes per day on homework and no homework tasks will be set over the weekends or on the holidays.

Families are encouraged to provide positive support to their children by establishing a regular routine for daily reading in a quiet, focused setting. Talking with their child about their classroom learning, and identifying any links that can be made between this learning and the family's culture and community, will further enhance positive connections between home and school and make learning meaningful and relevant to the child.

For all year levels the emphasis on homework is on quality rather than quantity

Teams will communicate the expectations for specific year levels at the beginning of the school year. As per the DET and school policy this will reflect classroom learning and will include:

- daily reading
- writing or maths skills revision
- investigations, research or other preparations such as a creative piece to support a school learning task
- individualised activities to support the learning needs of a student
- regular use of Education Apps such as Reading Eggs, Mathletics, Essential Assessment and Sunshine Online

EVALUATION:

Revision of the policy at the beginning of the school year to ensure a consistent and appropriate approach to homework.

Improved results for the 'homework' categories in both the Parent Opinion Survey and Student Survey.

School Name / Department Bell Park North Primary School		Policy name Homework Policy		Policy Ref. Number	
Owner: Bell Park North Primary School	Approved by: School Council		Date: 14/06/2022	Version 1.0	Page 1 of 2

Schedule 3 Notice of Election and Call for Nominations (for First School Council Election) 2024

An election is to be conducted for members of the school council of **Bell Park North Primary School**.

Nomination forms may be obtained from the school and must be lodged by **4 pm on Monday 12th February 2024**
The ballot will close at **4 pm on Monday 26th February 2024**.

Following the closing of nominations a list of the nominations received will be posted at the school. The terms of office, membership categories and number of positions in each membership category open for election are as follows –

<u>Membership category</u>	Term of office	Number of positions
Parent member (2 year term)	From the day after the date of the declaration of the poll in 2024 and inclusive of the date of the declaration of the poll in 2026	5
Parent member (Casual -1 year term)	From the day after the date of the declaration of the poll in 2024 to and inclusive of the date of the declaration of the poll in 2025	1
DoE employee member (2 year term)	From the day after the date of the declaration of the poll in 2024 to and inclusive of the date of the declaration of the poll in 2026	1
DoE employee member (Casual-1 year term)	From the day after the date of the declaration of the poll in 2024 to and inclusive of the date of the declaration of the poll in 2025	1

If the number of nominations is less than the number of vacancies, a notice to that effect and calling for further nominations will be posted in a prominent position at the school.

Anthea Lagadinos

(Principal)

SCHOOL SMOKING AND VAPING BAN

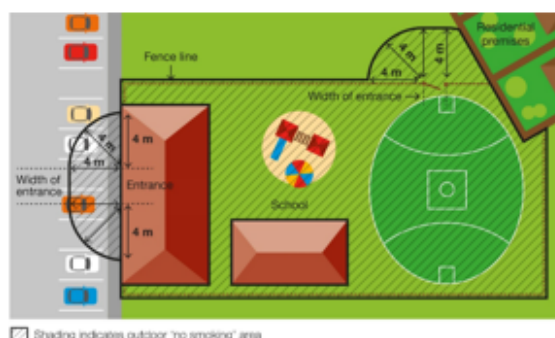
By law, smoking and vaping are banned within the grounds of, and within four metres of an entrance to, all childcare centres, kindergartens, preschools and schools.

WHERE THE BAN APPLIES

The smoking and vaping ban applies to:

- anyone present on school premises during and outside of school hours including students, teachers, contractors, parents or carers or the wider community, such as sporting groups
- all activities that take place on school premises including pre-schools, kindergartens, outside school hours care, cultural, sporting or recreational activities and school fetes

Smoking and vaping are also banned within four metres of any part of a pedestrian access point (entrance) to the premises.



The diagram adjacent shows an example of where the smoking ban applies at a school.

WHEN THE BAN APPLIES

The smoking and vaping ban applies at all times, no matter whether the building or school grounds are being used for education purposes or other purposes. The ban therefore applies when other activities are taking place on the school grounds, such as fetes or sporting events, as well as during school hours.

WHY THE BAN EXISTS

To protect children and young people from the dangers of second-hand smoke and vapour

This ban ensures that children and young people can enter and leave these areas without being exposed to harmful second-hand smoke and vapour. Their health is particularly at risk because they have smaller airways and less developed immune systems compared to adults.

To reduce the role modelling of smoking and vaping behaviours around children and young people

Children and young people are more likely to view smoking and vaping as socially acceptable when they regularly see people doing it.

Banning smoking and vaping in areas used by children and young people will discourage children and young people from using tobacco or e-cigarette products.

DEFINING A PEDESTRIAN ACCESS POINT

A pedestrian access point in relation to premises means a door or gate by which a person can enter or exit the premises. It *does not* include an emergency exit that is locked to entry.

It *does* include shared doors or gates. For example, where a building is occupied by a childcare centre as well as other organisations, such as private businesses, any shared entrances that are used to access both areas of the building would be subject to the smoking ban.

Any entrances which lead only to premises not included in the smoking ban, such as the private offices, would not be subject to the smoking ban.

WHAT PENALTIES APPLY

Fines are described under law in penalty units. From 1 July 2020 to 30 June 2021, a penalty unit is valued at \$165.22.

The penalty for breaking school smoking and vaping ban laws is a court fine of a maximum of five penalty units (\$826 as of 1 July 2020) or an infringement fine of one penalty unit (\$165 as of 1 July 2020).

The value of a penalty unit is set annually by the Department of Treasury and Finance and is updated on 1 July each year. For current penalty unit values, visit the Department's [website](http://www.dtf.vic.gov.au/financial-management-government/indexation-fees-and-penalties) <www.dtf.vic.gov.au/financial-management-government/indexation-fees-and-penalties>.

FOR MORE INFORMATION

For more information:

- visit the [tobacco reforms website](http://www.health.vic.gov.au/tobaccoreforms) <www.health.vic.gov.au/tobaccoreforms>
- call the Tobacco Information Line on 1300 136 775

To view the legislation visit the Victorian Government's [legislation website](http://www.legislation.vic.gov.au) <www.legislation.vic.gov.au> and search *Tobacco Act 1987*.

© State of Victoria (Department of Education and Training) 2020. Except where otherwise [noted](#), material in this document is provided under a [Creative Commons Attribution 4.0 International](#) license. Please check the full [copyright notice](#).



Bookings now open!

	Monday - Friday Hours of Operation	Fees before Child Care Subsidy*	Out-of-pocket fees after Child Care Subsidy**
Before School Care (BSC)	6:45 AM to 8:45 AM	\$20.81	\$2.08
After School Care (ASC)	3:10 PM to 6:00 PM	\$28.47	\$2.85
Pupil Free Day	6:45 AM to 6:00 PM	\$71.18	\$7.12
Holiday Program***	6:45 AM to 6:00 PM	\$71.18	\$7.12

*Standard fee costs **before** Child Care Subsidy / ** Standard fee costs **after** maximum Child Care Subsidy / *** Standard fee costs **excluding** incursions/excursions

Cancellation Fees

(No Child Care Subsidy applied to Cancellation Fees)

BSC/ASC within **24 hours** of session start time: **\$4.00**

Holiday Program within **5 days** of session start time: **\$10.00**

Same day cancellation fee is out-of-pocket session fee.

Late Booking Fees

(Child Care Subsidy is applied to Late Booking Fees)

BSC/ASC within **24 hours** of session start time: **\$4.00**

Holiday Program: book less than **5 days** from the session start time fee is **\$10.00**

Late Pick-up Fees

(Child Care subsidy does not apply to Late Pick-up Fees)

\$1 per minute after service close time.

To register visit theircare.com.au

Service Phone number:
0484 311 882

Your service Coordinator will be available during session times.

Save up to 90% With the Child Care Subsidy!



TheirCare support team is available between 6.30am - 9pm weekdays (Eastern Standard Time)
on **1300 072 410** or **info@theircare.com.au**



TheiCare
where kids love to be!



NEWSLETTER TERM 1 EDITION 1

We acknowledge the Traditional owners of the land, the Wadawurrung Peoples of the Kulin Nation and pay our respect to their Elders, past, present and emerging.

The summer holidays were a blast! The children participated in a range of activities and excursions! In Week 1, the children enjoyed making their very own 'Shoo Fly' hats. We had a mini golf adventure where the children challenged each other on the mini golf course! The children had the opportunity to race each other in billy carts in the TheirCare Soap Box Derby! Week 2 consisted of a trip to Village Cinemas to see 'Wish', bubble fun and a trip to Bounce! The children also created their own tie dye pandas. In Week 3 we hosted TheirCares Got Talent where the children showcased their talents of dancing, tricks and showing off their artwork. Our final excursion for the holidays was inflatable world, with lots of races on the obstacles. We look forward to the new year and all the fun it will bring!



SESSION TIMES
BEFORE SCHOOL CARE:
6:45AM - 8:45AM
AFTER SCHOOL CARE:
3:10PM - 6:00PM
PUPIL FREE DAY
6:45AM - 6:00PM
HOLIDAY PROGRAM:
6:45AM - 6:00PM



Connect Up Program Worker

Hi Bell Park North PS families!

My name is Renae and I work in the Connect Up program provided by Meli (previously Bethany Community Support).

I am available to meet with families to provide free and confidential support for parents/carers/families who:

- *May be experiencing family challenges and need support*
- *Would like to build their parenting skills*
- *Are keen to find out about local support services available for families*
- *May need support with referrals to other services*

Please speak to the school Welfare Officer Rosalie Scott if you would like to access this service.





AUSTRALIA'S LEADING CHILDREN'S SOCCER PROGRAM

Term 1 starting in 09/02/2024
Geelong East Primary School,
Armstrong Creek School, Bellarine
Aquatic centre - Ocean Grove
Weekend Classes





Australia's leading childhood
development sports program

MINIS

For boys and girls
aged 2.5 - 3 years

PRESCHOOL

For boys and girls
aged 3 - 5 years

JUNIOR

For boys and girls
aged 6 - 8 years

PREMIER

For boys and girls
aged 9 - 11 years

HOLIDAYS

Exciting school
holiday programs

BIRTHDAYS

Soccer themed
birthday parties

REGISTER NOW

soccajoeys.com.au | 1300 781 735

geelong@soccajoeys.com - 0424 042 410



JOIN US AT BECKLEY PARK
SUNDAY 18 FEBRUARY 2024

Camp Quality **GEELONG**

CONVOY



SAY HELLO TO
OUR PUPPETS!

CHECK OUT SOME
SHINY TRUCKS!



CHEER ON
THE CONVOY!

TAKE SELFIES
WITH COOL CARS!



PH: 1300 662 267 CONVOY.ORG.AU

OR SCAN THE
QR CODE FOR MORE
INFORMATION

ABOUT CAMP QUALITY

Raising funds for Camp Quality, Convoy Geelong will bring our community together in support of kids and families facing the challenging realities of a cancer diagnosis.

Camp Quality is an Australian children's cancer charity that has been improving the quality of life for kids facing cancer for 40 years. They help kids and families from the heartbreaking news of a cancer diagnosis through every step of their cancer experience.

Camp Quality brings positivity, fun and laughter back into the lives of kids facing cancer through programs and services that help build optimism and resilience through community, education and fun.



CHEER ON THE TRUCK CONVOY!!!

If you can't make it to the Festival, not to worry – check out our Convoy route, to find out where you can setup your cheer station! Pom-Poms, signage and plenty of smiles and waves are welcome!



WHEN	WHAT	
6.30am	Doors open	Beckley Park opens its doors for you. Drivers and riders need to register at the entrance gate.
8.00am	Driver registrations close	Drivers and riders need to allow enough time to register and find their allocated parking spot.
8.15am	Driver briefing	Compulsory briefing for Convoy participants. Drivers and riders assemble at the stage.
9.00am	Convoy departure	Start your engines! Ensure you are ready for a 9am Convoy departure. Please follow volunteer and traffic controller directions.
10.30am	Venue entertainment commences	It is time to enjoy the rides, the music and all the other entertainment! Have fun!
10.30am	Convoy arrival (approx.)	Our Convoy is expected to arrive back at Beckley Park. Once every vehicle has parked, feel free to check them all out!
11.30am	Awards presentation	Join us for the Convoy awards presentation and put your hands together for our top fundraisers!
2.30pm	Event concludes	Thanks so much for coming and for supporting Camp Quality's work! See you next year for another epic Geelong Convoy!



BRING LAUGHTER, FUN AND
POSITIVITY BACK INTO THE
LIVES OF KIDS FACING CANCER!

Bell Park North Community Hub is



A welcoming place where families of several and diverse backgrounds come together to share, connect and learn.
Free Registration and Children are welcome.

Toy Library, English classes, Play group, Excursions, Citizenship sessions, Art workshops and Zumba class.

**For more info please contact Community Hub leader
Azadeh Doosti on: 0422909487**



Bell Park North
Primary School



FREE

Bell Park Playgroup

Playgroup commencing **Wednesday 15 February**

Bethany Community Support runs playgroups as part of our Connect Up program, a local service that supports families to help their children thrive

Playgroups connect families to community and provide a place for parents to develop skills and for children to learn. They are also a great way to meet new people and socialise with other families.

For more information regarding Bell Park Playgroup please call **Renae** on **0490 669 510**

- Teach your child new skills
- Meet new families with young children
- Share information and ideas
- Fun activities for you to share with your preschool children

**Bell Park North Primary School
16 - 26 Barton Street Bell Park**

Wednesdays 9.30am - 11am

Bring a healthy snack and a water bottle for your child



Community Hub Leader
Azadeh Doosti
0422909487

bethany.org.au



Together We Achieve

Bell Park North
Primary School



Toy Library Free

Every Wednesday

9:30 am - 10:30 am

16-26 Barton St, Bell Park

**Join
Us**

For more information contact

Community Hub Leader

Azadeh Doosti

0422909487



Canteen News

Welcome back to our school community new and old.

Normal Canteen Days are **WEDNESDAY, THURSDAY, FRIDAY**

Looking forward to seeing all your smiling faces.

BREAKFAST CLUB

Breaky Club will now be available from **MONDAY** to **FRIDAY** each week

We are now asking for donations of

Margarine, Bread and Milo

CANTEEN

Frozen Yoghurt **NO** longer available.

JJs \$1.50

Vegie Crackers \$2.00

Snaps \$2.00

Order on-line via Compass.





Canteen Menu 2023



Canteen is open Wed, Thur & Fri

Brekky Program runs every day (Monday – Friday)

Place Name, Grade and Room number along with Food order on bag.
Money to be placed in bag and then order to be placed in the basket in classroom.



Thank you

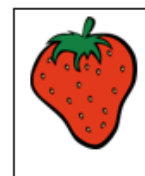
Paper Bags	15c		
Tomato/BBQ Sauce	50c		
Sandwiches and Wraps		Hot Food	
Add 50c for rolls or toasting			
60Buttered Roll	\$2.70	Sausage Roll	\$3.80
Vegemite	\$2.90	Party Pies	\$1.60
Vegemite and Cheese	\$4.00	Hotdogs	\$4.40
Cheese	\$3.80	Hawaiian Pizza	\$4.40
Ham	\$3.80	Chicken Nuggets x 3	\$2.80
Ham 'n' cheese	\$4.40	Chicken Nuggets x 6	\$5.50
Ham, Cheese 'n'	\$4.90	Chicken Burger	\$5.50
Tomato		Chicken Burger 'n' Cheese	\$6.00
Egg 'n' Lettuce	\$5.50	Lasagne	\$5.50
Ham 'n' Salad	\$7.50	Spaghetti	\$5.50
Chicken 'n' Salad	\$7.50	Steamed Dims Sims	\$1.30
Salad (no meat)	\$6.00	Corn on the Cob	\$1.10
Salad contains:		Chicken Tender Wrap	\$6.00
Cheese, beetroot, tomato,		(Lettuce, tomato and choice of mayo or chilli sauce)	
cucumber, carrot, lettuce, celery		Hot chicken roll w/cheese	\$5.50
Egg extra 50c		Hot chicken roll w/gravy	\$6.00
Boiled egg	\$1.10		
Drinks		Halal Items	
Water – Large	\$1.30	Hot dogs	\$4.40
Water - Small	\$1.00	Nuggets	3 for \$2.80 6 for \$5.50
		Salad Tubs	
		Small Salad Tub	\$6.60
		Fruit Salad	\$7.70

Snacks

BBQ Snaps = \$2.00
Vege Snaps = \$2.00
Butter Popcorn = \$1.50
Original Popcorn = \$1.20
JJ's = \$1.50
Petzels = \$1.00
Assorted muffins = \$1.00
Piklets & sprinkles = 50 cents

Fruit Snacks

Watermelon = 50 cents
** Rockmelon = 50 cents)
** Honeydew = 50 cents)
** Grape = 10 cents) ** Seasonal fruit **
** Strawberry = 10 cents)
** Kiwi Fruit = 10 cents)
Kabana = 10 cents
Cheese = 10 cents
Wafer Biscuits = 20 cents



Prices as of Monday 10th July 2023