



BELL PARK NORTH PRIMARY SCHOOL

NEWSLETTER #21, Monday 4th December 2023

Principal:

Anthea Lagadinos



Assistant Principal:

Christopher Cox



TERM 4

LOTE Day
Friday 8th December

School Concert
Monday 11th December
(9:30am—12:30pm)

Fun Day
Thursday 14th December

Transition Morning
Friday 15th December

Christmas Raffle
Friday 15th December

Grade 6 Graduation
Monday 18th December

Last Day of Term 4
Wednesday 20th December
School finishes 1pm

FROM THE PRINCIPAL.....

Dear Parent / Carers,

Our Enjoyable Weeks Have Continued

Once again we have been enjoying each week with great work and hard efforts continuing. The end of the year is approaching quickly. I ask that you continue to be vigilant in checking COMPASS for messages regarding End of Year Activities.



School Concert

We appreciate your understanding with having to postpone the concert due to poor weather, but look forward to seeing families on Monday 11th December (9:30am to 12:30pm).

The students have been working extremely hard on their performances and are excited to share them with you.

Book Fair

Thank you to Mrs Mandekic for organizing the Book Fair and to all the families and staff who made purchases in support of our Library. This was very much appreciated.



2024 Kinder To Foundation Transition

We were excited to see our new Foundation children here at school for two mornings on the 23rd and 24th November. The children attended two hour sessions on both mornings and their parents attended an information session about starting school. We are looking forward to the new Foundation students joining us next year.

Bell Park North Primary School F-6



Vision Statement

Our Vision: "Together We Achieve"

At Bell Park North Primary School, our staff, children and parents work together to support the social, emotional and academic learning of all students in our care.



Our Values

Values which form the basis of our actions are:

Friendship
Respect
Integrity
Equality
Never Give Up
Do Your Best
Safety

Term 4 Value
"Equality"

School Council President:
Rebecca Hunt

PO Box 244 North Geelong 3215

Ph. 5278 3548 Fax 5278 4418

www.bpnps.vic.gov.au

bell.park.north.ps@education.vic.gov.au



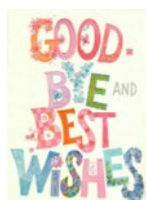
Report Writing

It is once again that time of year when teachers have been undertaking the enormous task of writing reports. I would like to thank them for their time and efforts they put into this task.

Parents will be able to access the report through the COMPASS platform for which you all have a password. Reports will be accessible to parents from the afternoon of Monday 12th December. Our Assistant Principal Mr Cox will be more than happy to assist you if you need help accessing your children's reports.

Staff Leaving

Mrs Marie Kirk will be retiring after 26 years at our school. This is wonderful for her and extremely sad for us as we lose a much loved member of our team. Marie has been an incredibly valuable contributor to our school and her support and enormous efforts over the years are greatly appreciated. We wish Marie all the very best and look forward to hearing about her adventures throughout her retirement.



Congratulations to Mr Devon Hassall who has picked up an ongoing position at another school. We wish him well.

Student Scholarships

Scholarships are available for eligible students in Grade 4 to Year 11, and for Year 12 students. The Department of Education and Training administers a number of scholarships that are available to eligible students who are currently enrolled in Grade 4 to Year 12 in 2022.

Applicants for these scholarships will be evaluated on their:

- * participation in school activities
- * community involvement
- * academic record for the current year.



Scholarships are either one-off payments or cover the duration of the student's course or annual study. Many of these scholarships have specific eligibility criteria so please refer to individual applications for more information. Applications are open and close on Wednesday 1st February 2023.

For more information and a list of available scholarships, see the [2023 Student scholarships for Grade 4 – Year 12](#) fact sheet. [For information on how to apply, refer to Student scholarships.](#)

End Of Year Events

- * Year 6-7 Transition Days – Tuesday 12th and Wednesday 13th December
- * Whole School Fun Day Excursions- Thursday 14th December
- * Final 2023 School Assembly – Friday 15th December
- * Year 6 Graduation-18th December
- * End of Year Wednesday 20th December- 1:00 p.m. Dismissal



Assembly

Our next assembly will be held this Friday at 2:20 p.m. in the school gymnasium. Grade Year 5's will be presenting an item. All parents are welcome.

2024 Staff Placements

Leadership

Principal - Miss Anthea Lagadinos

Assistant Principal - Mr Christopher Cox

Learning Specialist (Teaching and Learning) / Intervention - Mr Ben Harmon



Classroom Teacher Placements

5/6N	Ms Jacquie Neale (Area Leader)
5/6C	Mrs Fiona Climpson
5/6S	Mr Shane Collins (New)
3/4G	Mr Alex Gear (Area Leader)
3/4P	Ms Ellen Pither
3/4P	Ms Karen Allan (New)
1/2B	Mr Brad Greenwood (Area Leader)
1/2P	Mrs Julie Pfeiffer
1/2S	Mr Mitchell Stoop
1/2D	Ms Sherridan Davies (New)
1/2C	Ms Jessica Cammarere (New)
Foundation O	Ms Gemma O'Dea (Area Leader)
Foundation E	Mrs Emily Chappell
Foundation C	Mr Timothy Cleeland

Specialist Teachers

Disability Inclusion Co-ordinator	Mrs Kristen Thomas
LOTE (Japanese)	Mrs Lucy Matthews
The Arts	Mr Ben Gibson (Specialist Leader)
Physical Education	Mr Ben Gibson / Mr Fred Lundstrom
STEM (Science, Tech, Engineering, Maths)	Mr Fred Lundstrom
Oral Language Intervention	Ms Caitlin Mahar
	Mrs Beth Carey
	Mrs Gailene Stojanovic

Education Support Staff

We are yet to finalise our Education Support Staff classroom positions but pleased to announce that following ES Staff will be continuing with us in 2024:

Mrs Trudi Dunn
Mrs Susie Harvey
Mrs Ros Lunardelli
Mrs Rachel O'Brien
Mrs Connie Romano
Ms Haley Parry
TBA (New)

Business Manager - Ms Sue Frith

Office Manager - Ms Kris Hollier

ICT Technician - Mr George Gkoumas

Welfare Officer - Miss Rosalie Scott

Community Hub Co-Ordinator - Ms Azadeh Doosti

Canteen Manager - Mrs Julie Van Der Vleit

Maintenance Manager - Mr John Crossett

Being COVID-Safe

The Department of Health **strongly recommends** that students and school staff:

- * who test positive to COVID-19 stay home and isolate for 5 days and do not attend school after 5 days if they are still symptomatic
- * who are symptomatic but have not tested positive not attend school. This does not include students with pre-existing conditions such as hay fever.

Parents and carers are recommended to continue to report their child having COVID-19 to both the school and the Department of Health.

We will, however, no longer report occurrences of positive cases to the school community. We ask parents and carers to continue to remain vigilant in preventing COVID-19 transmission. Any student who is unwell should continue to remain at home. This is about keeping students healthy and well in our school and reducing the spread of both COVID-19 and other respiratory diseases.

Parents and carers will be contacted if their child shows symptoms while at school. Students who wish to wear a mask should continue to do so. To keep our school as safe as possible, we will also continue to use air purifiers and other COVID-19 prevention measures.

We appreciate and thank you for your continued efforts to keep our school community safe and well.

Christopher Cox
Acting Principal

Friendly Reminders:

- **Hats must now be worn every day when outside when UV index is above 3 and until 1st May.**
- **Full school uniform must be worn every day.**
- **"Every Minute Counts" (It's Not Okay to Be Away or Late to School.)**



From the School Office



2024 Parent Payments

Bell Park North Primary School is looking forward to another great year of teaching and learning and would like to advise you of our school's Payment Policy for 2024.

Department of Education and Training (DET) Student Resource Package (SRP) Provides for the teaching of the standard curriculum and basic operational costs such as school administration, utilities and services, staff salaries, urgent works, maintenance, cleaning and general school operations.

The payments and contributions provided by our parent community are an essential component of funding. The three areas for which parents may reasonably be invited to make a payment or contribution are:

- Curriculum Contributions are items and activities that students use, or participate in, to access the curriculum. These include classroom consumables, materials, equipment, digital online subscriptions, software & licenses and classroom devices.
- Extra-Curricular items and Activities are those items, such as excursions, incursions, camps and other activities or services that are offered in addition to the standard curriculum program that are on a user pay basis.
- Other Contributions are invited to be made by Parents/Guardians. The voluntary contributions or donations to the school are for maintaining our buildings & grounds, playground and school ground's improvements and extensions.

In 2024, your contributions will also purchase all stationery required by your child throughout the year. This will be delivered to the school. No further book pack items will be required to be purchased.

Book Club - 2024

From 2024 book club orders will now need to be processed online. A large number of our families already order and pay online for Book Club (thank you to those families). Included in this newsletter are instructions on creating a new registration and how to order books.



Please see the office if you have any questions.

End of Year Celebrations

The end of year celebrations excursions will be held on Thursday 14th December. Excursions have been uploaded onto compass for consent and payment.

- Foundation = Werribee Zoo
- Grade 1/2 = All 4 Kids & Reading Cinemas
- Grade 3/4 = Bellarine Adventure Golf & Village Cinema
- Grade 5/6 = Adventure Park

GRADE 6 2024 RUGBY TOPS

Instructions for ordering the Grade 6 2024 rugby tops was distributed to our 2023 Grade 5 families during the week. Orders are to be online directly through Bellarine/Noone Uniforms. No orders will be taken at the school office. If you have any issues, please visit the office for help.

TheirCare Holiday Program

TheirCare will be open
Thursday 21st December &
Friday 22nd December for out
of school hours care.
TheirCare holiday program will
re-commence Monday 8th
January 2024.

<https://theircare.com.au/holiday-programs/bell-park-north-primary-school/>

Welcome to Book Club LOOP

(Linked Online Ordering and Payment platform for parents)

Create an account [here](#), if this is your first time to LOOP.

NEW REGISTRATION

YOUR DETAILS (PARENT)

First Name*

Last Name / Initial*

Email Address* Remember: This email address will become your username

Password*

Confirm Password*

Mobile *

☐ Notify me via email of Scholastic offers and promotions

Note: if you have already registered please [login](#) to update your profile and your children's details.

CHILD'S DETAILS (Optional, can be completed in your profile after registration) [ADD NEW CHILD](#)

Stored Child's Details	School	Class
<input type="text"/>	<input type="text"/>	<input type="text"/>

Once you have created a register, you will be able to order.

If you get stuck and need help, simply call our friendly Customer Service team on: **1800 021 233** between the hours of 8.30am to 5pm.

How do I Order?

1. Simply grab your child's Book Club catalogue and either sign in or register your account.
2. Click on ORDER and then select your school and your child's class*
3. Add your child's **first name & last initial** (so the school knows who the book is for) PLEASE NOTE: Your child's details will never be shared with 3rd parties OR used for marketing purposes - this is for distribution purposes only.
4. Enter the item number from the Book Club catalogue.
5. All orders are sent directly to the school for submission to Scholastic. Books will still be delivered to your child's classroom if you order by the close date.
6. Afterwards, there's no need to return paper order forms or payment receipt details back to your [school](#)
7. **Scholastic LOOP Android App**
8. Scholastic **LOOP** Android App supported models: Devices running Android 3.2 or later.
9. To find the version number on your Android device, go to your device's main Settings menu > About Phone or About tablet.
10. Please Note: Blackberry devices are not supported.



Welfare Corner



Moving on from Primary School

So, your young person is moving onto Secondary School next year, one chapter of their life ends and a new chapter begins. There are often mixed emotions for both you and your young person.

It is normal to have these mixed emotions.

You want the transition to be successful. Successful transitions help to build your young person's confidence for future changes in their lives.

Some strategies to help make transition successful:

- Plan and get organized.
- Know how your young person is going to travel to and from school.
- Organise their school uniform.
- Visit the school, get to know the school.
- Make sure your young person attends the transition days. Sit down with your young person before transition and talk with them about any questions they may have before attending transition and get them to write them down, so they remember to ask.
- Make sure they have all of their books etc. ready for when school starts.
- Establish a routine – in the week leading to the start of school, start getting a routine happening, what time do they need to get up, organise their lunch and other food. What time do they need to leave home by to be at school on time?
- Discuss with them how they are feeling? Do they have any concerns? Discuss, 'what if' scenarios.
- Watch for signs that they are having difficulty (see links below).
- Plan some time for fun and relaxation.

Most importantly, we want you and your young person to enjoy this next chapter in their lives. This change is a big change for parents also, so be kind to yourself during this time of transition.

Helpful websites:

<https://raisingchildren.net.au/teens/school-education-work/school-choosing-starting-moving/starting-secondary-school>

<https://headspace.org.au/friends-and-family/the-transition-from-primary-to-secondary-school/>

Rosalie Scott – Wellbeing Officer



Swimming with SEAL

(Social Emotional Awareness Learning)



*Our students are currently learning about **Topic 6 - Help - Seeking***

Learning activities in this topic area are designed to help students discuss the importance of seeking help and providing peer support when dealing with problems that are too big to solve alone. This helps to normalise and destigmatise help-seeking behaviour. Scenario-based activities help students identify situations in which help should be sought, identify trusted sources of help, and practice seeking help from peers and adults. (Resilience, Rights and Respectful Relationships).

If you have any questions about Respectful Relationships, please speak to your child's classroom teacher.

This will conclude our 2023 SEAL program.

WEEKLY AWARDS

Week Ending 24th November 2023

Grade	Student	Reason for Award
Foundation C Mr Cleeland	Charlotte Vigh	For the growth she has made across the curriculum and as a member of the class. Charlotte has grown to be a gentle and caring member of our class and is appreciated by her peers. Congratulations Charlotte!
Foundation M Miss Maddocks	Frankie Bromley	Frankie has been trying her hardest to write the sounds she hears during writing sessions and has been making great success. She is a responsible, caring, helpful student in the classroom, keep it up superstar!
Foundation R Miss Roosje	Aylah Johnstone	For doing an excellent job in her reading assessment this week! Aylah has been persistent with her reading at school, practising to take her time when tackling unknown words. Keep up your fantastic effort Aylah!
1/2 B Mr Greenwood	Izaak Fiolet	Izaak has had a sensational term. He has worked hard in all areas of his learning. He has become an active contributor to classroom discussion and has shown great improvement in his writing. Keep up the great work Izaak!
1/2 G Mr Gear	Lilah Dagg	For her outstanding efforts across the curriculum this term. Lilah has applied herself to all learning experiences and has consistently reflected our school value 'Do Your Best'. Keep up the fantastic work Lilah!
1/2 O Miss O'Dea	Dexter Collins-Dunford	For being a responsible and respectable class member and for always helping others. Keep up the awesome work Dexter, you're a superstar!
1/2 P Miss Pither	Lily Balaz	For having such a positive attitude towards her learning. Lily has been trying exceptionally hard to listen to teachers and follow instructions given to her. She has been able to complete set tasks to a high standard and has been actively making green choices that have had a positive impact on her learning. Keep up the great work Lily!

WEEKLY AWARDS

Week Ending 24th November 2023

Grade	Student	Reason for Award
3/4N Ms Neale	Aubree Witney	For Never giving up and working extremely hard towards improving her reading this Semester. Aubree reads daily, asks questions when she does not understand something and perseveres when learning new skills for reading. Her recent reading PAT test and OnDemand have shown her hard work paying off. Excellent work Aubree you can achieve anything!
3/4P Mrs Pfeiffer	Elena Montagnese	For her reading accuracy and improved fluency within her extended and challenging texts. Elena has also championed the school value of Equality and continues to respect the diversity and skills of others. Keep up the excellent work and attitudes Elena!
3/4S Mr Stoop	Logan Isaacs	For his hard work and persistence in writing. Logan has been writing a powerful and passionate speech relating to becoming a house captain in 2024. Fantastic work Logan, good luck.
5/6C Mrs Climpson	Jasmine Dimovski	For working hard this term to improve her reading skills. She is becoming a lot more confident. Jasmine comes to school each day with a huge smile on her face and is a positive role model to her peers. Keep up the great work Jasmine!
5/6D Mr Hassall	Abbas Hussaini	Abbas has been exhibiting regular actions of leadership in the classroom this week. He has been present and ready to learn while ensuring classmates follow school expectations. Brilliant work Abbas!
5/6H Mr Harmon	Josh McKay	Josh has been a great role model in our classroom throughout the year! He is always enthusiastic, friendly and well-mannered. Josh has also worked hard and he achieved pleasing results in his Literacy and Numeracy assessments. Amazing job Josh!



WEEKLY AWARDS

Week Ending 24th November 2023

Grade	Student	Reason for Award
PE Mr Gibson	Skylar Payne-Gumbleton	For approaching the school concert dance with a positive attitude and a willingness to persist with a challenging task. Skylar continues to try her personal best each week. We can't wait for the final performance Skylar!
Media Arts Mr Gibson	Jessy Sawdon	For creating an engaging narrative using a range of clay animation techniques. Jessy shaped and modelled the clay and used her extensive knowledge of the iPad to edit the images. Fantastic work Jessy.
STEM Mr Lundstrom	Savannah Oakes	The teachers at Bell Park Primary School are very impressed with how you take responsibility for all your learning and always try your best. It is wonderful to see how you excel with your learning about insects and small animals. You have become a real role model and a leader during our STEM sessions. Keep up your fantastic work Savannah!
PE Mr Lundstrom	Charlotte Storm	For her persistence with challenging tasks during PE. Charlotte focuses on the skills she wants to improve, such as hand eye coordination and she positively responds to feedback to achieve her personal best in all the sport activities. Charlotte's persistence and proactive attitude in PE contribute to a positive and growth-mindset learning experience. Great work Charlotte!
JAPANESE Mrs Matthews	Jayson Stannard	Jason consistently attends his weekly Japanese lesson with a positive attitude, staying focused, actively participating in class discussions, and demonstrating a willingness to have a go at all tasks with his best effort. Well done Jayson, keep up the amazing effort!
GREEN TEAM Mr Stoop	Patrick Washington	For improving his knowledge on local flora and fauna within the community and spreading the information to other students to help inform them of how to protect and improve conservation.





UNIFORM POLICY

BELL PARK NORTH PRIMARY SCHOOL

School Council, in consultation with the School Community has introduced a student dress code for the compulsory wearing of school uniform. This dress code has been in place for several years. All parents are made aware of uniform requirements when they enrol their children.

Parents are requested to ensure that their children wear the school uniform that is correct and is kept in a clean and tidy condition. Variations to school uniform are not permitted unless evidence is provided on medical or religious conditions.

AT BELL PARK NORTH PRIMARY SCHOOL THE STUDENT DRESS CODE WILL:

- Promote and encourage a sense of belonging, identification and pride in our school.
- Assist with student safety and group security.
- Eliminate competitive dressing and unnecessary peer group pressure.
- Provide a neat and practical style of dress.
- Ensure new students are integrated easily and smoothly.

GUIDELINES

1. The Bell Park North Primary School Dress Code shall apply to all students while they are at school, travelling to and from school and on all school related activities unless otherwise specified by the school.
2. The school uniform must be worn correctly, in accordance with this policy. Parents should purchase only the listed, approved items from our school approved supplier. Children who are not wearing school uniform, or are wearing items of clothing that are not approved, will receive an 'Out of Uniform' note.
3. The approved uniform supplier will be Noone Imagewear (Bellarine Uniforms; 162 Moorabool Street Geelong).
4. Thongs, open-toe sandals, scuffs, ugg boots, gum boots and platform soles are not acceptable footwear. Shoes must be secured on children's feet at all times.
5. The Principal or delegate shall be responsible for ensuring that clothing, jewellery, footwear, sunhats; etc meets appropriate standards in regard to student safety and overall student presentation and appearance, in line with this policy. This will include ensuring that dress is appropriate on casual dress days e.g. no singlet tops exposing shoulders, shorts and dresses not to be too short.
6. Parents / Guardians are responsible for ensuring their child/children are dressed in school uniform.
7. When a Parent/Guardian can demonstrate significant economic hardship that prevents him/her from complying with the dress code they can make application for special funds from the Principal.
8. SunSmart broad-brimmed sunhats in the school colour are to be worn outside at all times from 1st September-1st May each year. In order to comply with SunSmart regulations for the rest of the year, children should have their hats available; as they will be required to wear them when the UV levels are above 3, regardless of the month.
9. For safety reasons no jewellery is to be worn, with the exception of: a watch, sleeper or stud earrings in the ear only. Children will be asked to remove excessive and/or unsafe jewellery with exception to religion.
10. Make up and coloured nail polish is not to be worn. A clear nail polish is acceptable.
11. Colouring of students' hair is an acceptable practice as long as the colour is of a natural shade. In the event that hair is coloured an unacceptable shade then the parent/guardian will be called to collect the child and re-colour the hair to an acceptable colour.
12. Hairstyles of an extreme style are not acceptable. Examples of extreme hairstyles include shaved stripes, Mohawk or similar styles.

School Name / Department		Policy name		Policy Ref. Number	
Bell Park North Primary School		Uniform Policy			
Owner:	Approved by:	Date:		Version	Page 3 of 3
Bell Park North Primary School	Staff	28/01/2020		1.0	

13. The Principal or the designated delegate will be responsible for determining acceptable standards in relation to hair colour and style.
14. All students' hair, boys and girls, that is of shoulder length or longer must be tied back and off the face for health and safety reasons.
15. Hair bands and ribbons should be white, navy blue or royal blue. No large ornaments such as flowers and scarves are acceptable. Jojo bows are acceptable providing they are white, navy or royal blue.
16. Jackets and raincoats are to be worn only in outdoor areas, and need to be removed once the student enters the school building.
17. Long sleeve t-shirts are not to be worn under school polo shirts.
18. Tracksuit pants or leggings are not to be worn under dresses/kilts.
19. Tights are not to be worn with Summer dresses.
20. Sports knickers or bike shorts may be worn under summer dresses. They should not be visible when standing. Boxer shorts are not acceptable under dresses and should not be visible under boys' shorts. Other underwear should not be visible at any time.
21. Any approved item of clothing may be worn at any time of the year regardless of whether it is on the 'summer' or 'winter' list.
22. All items of uniform, including bags and hats, must be clearly named with a permanent marker or iron labels.
23. All students are required to wear the approved School Uniform which is defined as:

Summer Uniform

•Polo Shirt-Short sleeve	Royal Blue/Navy with logo
•Polo Shirt-long sleeve	Royal Blue/Navy with logo
•Shorts	Navy Blue (Gabardine, elastic waist)
•Trousers	Navy Blue Stubbies (Gabardine, elastic waist)
•Culottes	Navy Blue
•School Dress	Blue/White stripe
•Socks	White sports socks or anklets
•Shoes	Black school shoes or runners
•Hat	Royal Blue broad-brimmed with logo
•1/2 Zip Windcheater	Royal Blue/Navy with logo
•Full Zip Windcheater (Bomber Jacket)	Royal Blue/Navy with logo

Winter Uniform

•1/2 Zip Windcheater	Royal Blue/Navy with logo
•Full Zip Windcheater (Bomber Jacket)	Royal Blue/Navy with logo
•Track Pants	Navy Blue with reinforced knee
•Trousers	Navy Blue Stubbies (NOT cargo)
•Polo Shirt-Short sleeve	Royal Blue/Navy with logo
•Polo Shirt-long sleeve	Royal Blue/Navy with logo
•Kilt/Pinafore	Navy/royal/white check
•Socks	White sports socks or anklets (or black/navy socks under trousers)
•Tights (with kilt only)	Navy
•Shoes	Black school shoes or runners
•Coat	Navy, polar fleece lining with Logo (optional)
•Hat	Royal Blue broad-brimmed with logo

Uniforms are available for sale at:

BELLARINE UNIFORMS

162 Moorabool Street

Geelong 3220

School Name / Department		Policy name		Policy Ref. Number	
Bell Park North Primary School		Uniform Policy			
Owner:	Approved by:	Date:	Version	Page 3 of 3	
Bell Park North Primary School	Staff	28/01/2020	1.0		

SCHOOL SMOKING AND VAPING BAN

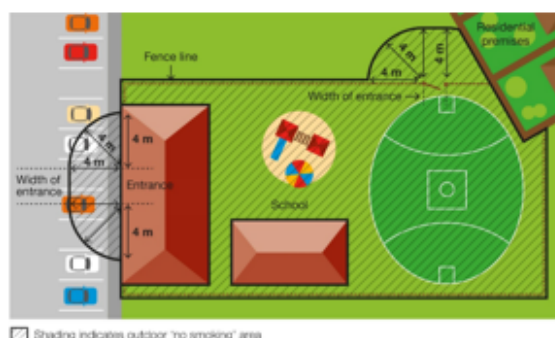
By law, smoking and vaping are banned within the grounds of, and within four metres of an entrance to, all childcare centres, kindergartens, preschools and schools.

WHERE THE BAN APPLIES

The smoking and vaping ban applies to:

- anyone present on school premises during and outside of school hours including students, teachers, contractors, parents or carers or the wider community, such as sporting groups
- all activities that take place on school premises including pre-schools, kindergartens, outside school hours care, cultural, sporting or recreational activities and school fetes

Smoking and vaping are also banned within four metres of any part of a pedestrian access point (entrance) to the premises.



The diagram adjacent shows an example of where the smoking ban applies at a school.

WHEN THE BAN APPLIES

The smoking and vaping ban applies at all times, no matter whether the building or school grounds are being used for education purposes or other purposes. The ban therefore applies when other activities are taking place on the school grounds, such as fetes or sporting events, as well as during school hours.

WHY THE BAN EXISTS

To protect children and young people from the dangers of second-hand smoke and vapour

This ban ensures that children and young people can enter and leave these areas without being exposed to harmful second-hand smoke and vapour. Their health is particularly at risk because they have smaller airways and less developed immune systems compared to adults.

To reduce the role modelling of smoking and vaping behaviours around children and young people

Children and young people are more likely to view smoking and vaping as socially acceptable when they regularly see people doing it.

Banning smoking and vaping in areas used by children and young people will discourage children and young people from using tobacco or e-cigarette products.

DEFINING A PEDESTRIAN ACCESS POINT

A pedestrian access point in relation to premises means a door or gate by which a person can enter or exit the premises. It *does not* include an emergency exit that is locked to entry.

It *does* include shared doors or gates. For example, where a building is occupied by a childcare centre as well as other organisations, such as private businesses, any shared entrances that are used to access both areas of the building would be subject to the smoking ban.

Any entrances which lead only to premises not included in the smoking ban, such as the private offices, would not be subject to the smoking ban.

WHAT PENALTIES APPLY

Fines are described under law in penalty units. From 1 July 2020 to 30 June 2021, a penalty unit is valued at \$165.22.

The penalty for breaking school smoking and vaping ban laws is a court fine of a maximum of five penalty units (\$826 as of 1 July 2020) or an infringement fine of one penalty unit (\$165 as of 1 July 2020).

The value of a penalty unit is set annually by the Department of Treasury and Finance and is updated on 1 July each year. For current penalty unit values, visit the Department's [website](http://www.dtf.vic.gov.au/financial-management-government/indexation-fees-and-penalties) <www.dtf.vic.gov.au/financial-management-government/indexation-fees-and-penalties>.

FOR MORE INFORMATION

For more information:

- visit the [tobacco reforms website](http://www.health.vic.gov.au/tobaccoreforms) <www.health.vic.gov.au/tobaccoreforms>
- call the Tobacco Information Line on 1300 136 775

To view the legislation visit the Victorian Government's [legislation website](http://www.legislation.vic.gov.au) <www.legislation.vic.gov.au> and search *Tobacco Act 1987*.

© State of Victoria (Department of Education and Training) 2020. Except where otherwise noted, material in this document is provided under a [Creative Commons Attribution 4.0 International](#) license. Please check the full [copyright notice](#).



Bookings now open!

	Monday - Friday Hours of Operation	Fees before Child Care Subsidy*	Out-of-pocket fees after Child Care Subsidy**
Before School Care (BSC)	6:45 AM to 8:45 AM	\$20.81	\$2.08
After School Care (ASC)	3:10 PM to 6:00 PM	\$28.47	\$2.85
Pupil Free Day	6:45 AM to 6:00 PM	\$71.18	\$7.12
Holiday Program***	6:45 AM to 6:00 PM	\$71.18	\$7.12

*Standard fee costs **before** Child Care Subsidy / ** Standard fee costs **after** maximum Child Care Subsidy / *** Standard fee costs **excluding** incursions/excursions

Cancellation Fees

(No Child Care Subsidy applied to Cancellation Fees)

BSC/ASC within **24 hours** of session start time: **\$4.00**

Holiday Program within **5 days** of session start time: **\$10.00**

Same day cancellation fee is out-of-pocket session fee.

Late Booking Fees

(Child Care Subsidy is applied to Late Booking Fees)

BSC/ASC within **24 hours** of session start time: **\$4.00**

Holiday Program: book less than **5 days** from the session start time fee is **\$10.00**

Late Pick-up Fees

(Child Care subsidy does not apply to Late Pick-up Fees)

\$1 per minute after service close time.

To register visit theircare.com.au

Service Phone number:
0484 311 882

Your service Coordinator will be available during session times.

Save up to 90% With the Child Care Subsidy!



TheirCare support team is available between 6.30am - 9pm weekdays (Eastern Standard Time)
on **1300 072 410** or **info@theircare.com.au**



NEWSLETTER TERM 4 EDITION 5

4th December 2023

We acknowledge the Traditional owners of the land, the Wadawurrung Peoples of the Kulin Nation and pay our respect to their Elders, past, present and emerging.

The past fortnight at TheirCare we have enjoyed playing lots of games! Outside we have enjoyed memory tag and toilet tiggy, whilst inside we have had lots of fun playing UNO and the taco game!

With Christmas fast approaching we have started some Christmas craft activities! The children enjoyed making their own Santa and Christmas creations using the paper cups and craft materials.

HOLIDAY PROGRAM

Holiday program bookings are now open!

We will be running a program on the 21st and 22nd of December, then return on the 8th of January for some more holiday fun!

Check out <https://theircare.com.au/holiday-programs/> for more information.



SESSION TIMES

BEFORE SCHOOL CARE: 6:45AM - 8:45AM

AFTER SCHOOL CARE: 3:10PM - 6:00PM

PUPIL FREE DAY 6:45AM - 6:00PM

HOLIDAY PROGRAM: 6:45AM - 6:00PM

Check out
what's happening December
at your local TheirCare!



TheirCare
Where Kids love to be!

**The place to be
these holidays!**

Summer Vibes

Bell Park North Primary School



Splash Splash

Splash into Summer! We'll bring the wonders of the seaside with mesmerising Sand Art, be amazed by the Bubble-ologist's magic, dive into an incredible ocean sensory experience filled with DIY treasures. Then take on the Ready, Set, Jump! Challenge, and join in on the laughter with the Roll Six and Splash group game!

From as low as 10.68*
Full Fee 71.18**



Festive Season Fun

It's festive time! Embark on the 'Polar Express-tacular' adventure! Join the festive fun with Santa's Reindeer Scavenger Hunt, craft dazzling Salt & Watercolour Snowflakes, witness the Exploding Snowman Experiment, challenge your skills in Cone Air Hockey, and don't miss the excitement of the Present Relay Race!

From as low as 10.68*
Full Fee 71.18**

*With the maximum CHILD CARE SUBSIDY. **Without the CHILD CARE SUBSIDY.

Book now at theircare.com.au

**Save up to 90% with the
Child Care Subsidy**

More exciting activities happening throughout January! Go to the website to find out!



TheiCare
where Kids love to be!

Bell Park North Primary School

Times 8:45 am – 6:00 pm

Location 16 – 26 Barton Street, BELL PARK VIC 3215

Call 0484 311 882



Public Holiday

In-house Fun

Special Activities

Super Excursion

Excursion

*With the maximum CHILD CARE SUBSIDY. **Without the CHILD CARE SUBSIDY.

Excursion & Super Excursions days: Arrive at the service by 9:00 am. Pick-up after 2:30 pm. Wear runners & socks.

MONDAY

TUESDAY

WEDNESDAY

THURSDAY

FRIDAY

MONDAY

TUESDAY

WEDNESDAY

THURSDAY

FRIDAY



1 JAN



2 JAN



3 JAN



4 JAN



5 JAN



8 JAN



9 JAN



10 JAN



11 JAN



12 JAN

no service
Public Holiday!

Service closed!

Service closed!

Service closed!

Service closed!

Passport to Summer

Shoo Fly Hats

Putt-Tastic Adventure

Soap Box Derby!

Ancient Egypt



From as low as \$12.35*
Full Fee \$183.49**

From as low as \$12.35*
Full Fee \$183.49**

From as low as \$12.35*
Full Fee \$183.49**

From as low as \$9.01*
Full Fee \$90.05**

From as low as \$12.35*
Full Fee \$183.49**

Mexican Fiesta

Movie Magic

Bubble - O - Fun

Jump 'n' Jam

Spray Dye Panda

Scottish Charm

TCS Got Talent!

World of Inflatables

Hawaiian Luau

no service
Public Holiday!

From as low as \$12.35*
Full Fee \$183.49**

From as low as \$12.35*
Full Fee \$183.49**

From as low as \$12.35*
Full Fee \$183.49**

From as low as \$12.35*
Full Fee \$183.49**

From as low as \$12.35*
Full Fee \$183.49**

From as low as \$12.35*
Full Fee \$183.49**

From as low as \$9.01*
Full Fee \$90.05**

From as low as \$12.35*
Full Fee \$183.49**

From as low as \$12.35*
Full Fee \$183.49**

From as low as \$12.35*
Full Fee \$183.49**

no service
Public Holiday!

no service
Public Holiday!

no service
Public Holiday!

no service
Public Holiday!

no service
Public Holiday!

no service
Public Holiday!

no service
Public Holiday!

no service
Public Holiday!

no service
Public Holiday!

no service
Public Holiday!

From as low as \$12.35*
Full Fee \$183.49**

From as low as \$12.35*
Full Fee \$183.49**

From as low as \$12.35*
Full Fee \$183.49**

From as low as \$12.35*
Full Fee \$183.49**

From as low as \$12.35*
Full Fee \$183.49**

From as low as \$12.35*
Full Fee \$183.49**

From as low as \$12.35*
Full Fee \$183.49**

From as low as \$12.35*
Full Fee \$183.49**

From as low as \$12.35*
Full Fee \$183.49**

From as low as \$12.35*
Full Fee \$183.49**

From as low as \$12.35*
Full Fee \$183.49**

From as low as \$12.35*
Full Fee \$183.49**

From as low as \$12.35*
Full Fee \$183.49**

From as low as \$12.35*
Full Fee \$183.49**

From as low as \$12.35*
Full Fee \$183.49**

From as low as \$12.35*
Full Fee \$183.49**

From as low as \$12.35*
Full Fee \$183.49**

From as low as \$12.35*
Full Fee \$183.49**

From as low as \$12.35*
Full Fee \$183.49**

From as low as \$12.35*
Full Fee \$183.49**

TheirCare
Where Kids love to be!

Summer

Passport

Summer Holiday Program

Movie Time

Splashtacular

Cultural Drumming

STEM Bubbles

The place to be these holidays!

Book now at theircare.com.au

Save up to 90% with the Child Care Subsidy

Holiday Program Important Information!

What to bring

- ☐ A healthy morning tea and lunch
- ☐ A labelled drink bottle for water
- ☐ Suitable clothing for an active day – closed toe shoes and jacket if wet/cold
- ☐ SunSmart hat for Spring and Summer holidays
- ☐ Medical Management Plan & Medication if applicable – see below for details

Don't forget!

- ☐ Keep your lunchbox nut-free to keep everyone safe
- ☐ Do not include food items that need to be reheated
- ☐ Label all items with child's name!
- ☐ Bus departure and arrival times are indicative only. For an accurate estimated time of arrival and departure please contact your service directly.

Personal belongings

Electronic devices, money and other valuables should be left at home.

If brought to the service, these items remain the responsibility of the family. TheirCare does not accept responsibility for loss or damage.

TheirCare provides

- ☒ Breakfast and afternoon tea snack
- ☒ Sunscreen
- ☒ Water to refill bottles

Child Care Subsidy

Please note that subsidised hours are calculated and allocated by Centrelink on a fortnightly basis. Check Centrelink for eligibility. Each session is calculated using the full service operational hours, not the hours attended by the child.

Unexpected changes to activities

In the unlikely event that an activity is unable to run, an alternative activity will be provided.

Activities and times are subject to change due to unforeseen circumstances such as severe weather or provider availability. If an alternative cannot be sourced we will update your invoice to reflect this.

Serious stuff!

Medical Management Plan & Medication

All children who have been diagnosed with a medical condition including allergies, food/chemical intolerances, anaphylaxis, asthma, epilepsy will need to provide:

- ☐ a completed Medical Management Plan with a colour photo
- ☐ necessary medication

Please note it is a legal requirement under the Education & Care National Regulations and the Terms and Conditions for booking that these are provided.

In the interests of child safety, care may be refused on the day should the appropriate documentation or medication or medication not be supplied.

Changes to your booking

Simply log into your account anytime to make the relevant changes or call us between 8:30am - 9:00pm weekdays on 1300 072 410.

Fees for changes to your booking

More than 5 days	Less than 5 days *	On the day	Full Fee
No Charge	\$10.00	\$10.00	

*Less than 5 days from the start of the booking (120 hours from the start of the session).

When making additional bookings, the \$10.00 fee is eligible for the Child Care Subsidy, which means you may only need to pay the gap, depending on your families' circumstances.

If you have any questions, please speak with one of our friendly Educators or call Customer Support on 1300 072 410.

TheirCare
Where Kids love to be!

Rosewall Community Centre

FREE

Family Movie Night

Pack a picnic, wear your best Oodie, and bring the family to a Christmas movie night at the Hendy St Hall. Popcorn & fairy floss provided! Get a selfie with Santa!

Friday 8 December
6pm (movie starts at 6.45pm)
Hendy St Hall: 36 Hendy St Corio



Bookings essential
Scan QR code or call
(03) 5275 7409 to book.



36 Hendy St, Corio



admin@rosewallinc.org.au



(03) 5275 7409



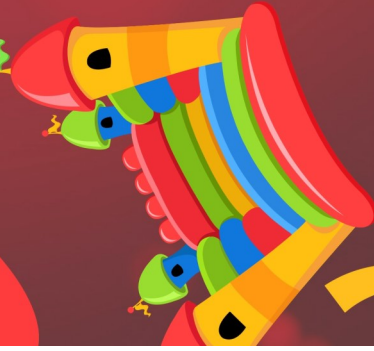
Rosewall Community Centre

Supported by





FREE EVENT



2023 Community Christmas Fun Day

The Beckley Centre

40 Broderick Rd, Corio

Tuesday 12th December



PLUS
A
MELBOURNE STARS
Cricket Zone

ACTIVITIES START FROM 4PM

FREE ENTRY INCLUDES

- JUMPING CASTLE
- FACE PAINTING
- KIDS BBQ
- LOLLY BAGS
- FREE SHOW BAG FOR THE FIRST 100 ENTRANTS
- LOADS OF PRIZES TO BE WON

AND OF COURSE A VISIT FROM SANTA



ALLAY OCCUPATIONAL THERAPY

GROUP PROGRAMS - INDIVIDUAL - EDUCATION

SEPTEMBER SCHOOL HOLIDAYS

Skills for School

4-6 year olds getting ready to start primary school.

Constructing Connections

9-11 year olds games for team work and communication.

TERM 4 OCT TO NOV

Circle of Security

Parenting program to support raising secure, resilient kids.

Foodies

3 to 5 year olds pre schoolers helping fussy eaters and positive mealtimes.

JANUARY HOLIDAYS 2024

Skills for School

4-6 year olds getting ready to start primary school.

Jumpstart! For High School

Getting ready for high school, with Grade 6 kids.

PAEDIATRIC OT

Allay has a team of paediatric OTs providing individual therapy in sensory, feeding, motor, parent support, regulation and more.

EDUCATION

Allay educates and trains teachers and parents to support us and our kids. Topics such as Sensory, Regulation, Challenging Behaviours, Play, Emotions and more.

LIMITED PLACES AVAILABLE

Join Allay today!



03 5201 0527
(ask for Intake)



info@allayoccupationaltherapy.com.au



allayoccupationaltherapy.com.au
(navigate to Contact Us)



UPCOMING OCCUPATIONAL THERAPY GROUP PROGRAMS

SEPTEMBER
SCHOOL
HOLIDAYS

Skills for School

4-6 year olds getting ready to start primary school.

Constructing Connections

9-11 year olds games for team work and communication.

TERM 4
OCT TO
NOV

Foodies

Helping fussy eaters and positive mealtimes.

Circle of Security

Parenting program to support raising secure, resilient kids.

JANUARY
HOLIDAYS
2024

Jumpstart! For High School

Getting ready for high school for Grade 6 kids.

Skills for School

4-6 year olds getting ready to start primary school.

LIMITED PLACES AVAILABLE

Join an Allay Group today!



03 5201 0527

(ask for Intake)



info@allayoccupationaltherapy.com.au



allayoccupationaltherapy.com.au

(navigate to Contact Us)



Term 4 Group Programs at Flying Start Children's Therapy



Swim Program

Days: Tuesdays and Wednesdays

Time: From 8:00am

Where: Torquay

Age: All ages welcome

Registration:

<https://www.flyingstartchildrenstherapy.com.au/swim-program>

Flying Start Children's Therapy provides an inclusive swimming and water safety skills program to support kids to be safer and more confident in the water. This program can support children who are unable to participate in mainstream swim programs.



Little Sports

Day: Tuesdays

Time: 9:30am to 11:00am

Location: Torquay

Age: Preschool and early primary aged children

Registration:

<https://www.flyingstartchildrenstherapy.com.au/little-sports>

Little Sports is a group program facilitated by an Occupational Therapist and Speech Pathologist, who will walk participants through the basic skills required for popular sports including football, soccer, tennis and basketball.



Lego Legends

Day: Tuesday

Time: 4:00 – 5:30pm

Location: Torquay

Age: Children aged 5-10 years

Registration:

<https://www.flyingstartchildrenstherapy.com.au/lego-legends>

Lego® Legends is a strengths-based program that aims to work with the child and use observation and adaptability skills. It uses children's love of Lego play as well as their interests to develop communication and social skills and build friendships in a fun, safe and supportive environment.

Term 4 Group Programs at Flying Start Children's Therapy



Games Club

Day: Wednesdays

Time: 4:00pm to 5:30pm

Where: Torquay

Ages: Children from 5 – 12 years of age

Registration:

<https://www.flyingstartchildrenstherapy.com.au/games-club>

Flying Start Children's Therapy offers an inclusive games club designed for children to come and connect with their peers in a supportive and safe environment. The group will be facilitated by an Occupational Therapist and/or Speech Pathologist and a therapy assistant depending on numbers.



Little Flyers – Inclusive Playgroup

Day: Thursdays

Time: 9:30am – 11:00am

Where: Torquay

Ages: Children 2-4 years who are not yet in kindergarten

Registration:

<https://www.flyingstartchildrenstherapy.com.au/little-flyers>

The group offers play-based activities run by a Speech Pathologist and Occupational Therapist to support and develop skills through play, music, story time, snack time and interactive activities.



Flying Colours Therapeutic Art Classes

Day: Thursday

Time: 4:00 – 5:30pm

Location: Torquay, VIC 3228

Age: All school aged children welcome

Registration:

<https://www.flyingstartchildrenstherapy.com.au/flying-colours>

Flying Colours allows children to use various mediums to provide an alternate form of expression.

Bell Park North Community Hub is



A welcoming place where families of several and diverse backgrounds come together to share, connect and learn.
Free Registration and Children are welcome.

Toy Library, English classes, Play group, Excursions, Citizenship sessions, Art workshops and Zumba class.

**For more info please contact Community Hub leader
Azadeh Doosti on: 0422909487**



Bell Park North
Primary School



FREE

Bell Park Playgroup

Playgroup commencing **Wednesday 15 February**

Bethany Community Support runs playgroups as part of our Connect Up program, a local service that supports families to help their children thrive

Playgroups connect families to community and provide a place for parents to develop skills and for children to learn. They are also a great way to meet new people and socialise with other families.

For more information regarding Bell Park Playgroup please call **Renae** on **0490 669 510**

- Teach your child new skills
- Meet new families with young children
- Share information and ideas
- Fun activities for you to share with your preschool children

**Bell Park North Primary School
16 - 26 Barton Street Bell Park**

Wednesdays 9.30am - 11am

Bring a healthy snack and a water bottle for your child



Community Hub Leader
Azadeh Doosti
0422909487

bethany.org.au



Together We Achieve

Bell Park North
Primary School



Toy Library Free

Every Wednesday

9:30 am - 10:30 am

16-26 Barton St, Bell Park

**Join
Us**

For more information contact

Community Hub Leader

Azadeh Doosti

0422909487



Canteen News

Welcome back to our school community new and old.

Normal Canteen Days are **WEDNESDAY, THURSDAY, FRIDAY**

Looking forward to seeing all your smiling faces.

BREAKFAST CLUB

Breaky Club will now be available from **MONDAY** to **FRIDAY** each week

We are now asking for donations of

Margarine, Bread and Milo

CANTEEN

Frozen Yoghurt **NO** longer available.

JJs \$1.50

Vegie Crackers \$2.00

Snaps \$2.00

Order on-line via Compass.





Canteen Menu 2023



Canteen is open Wed, Thur & Fri

Brekky Program runs every day (Monday – Friday)

Place Name, Grade and Room number along with Food order on bag.
Money to be placed in bag and then order to be placed in the basket in classroom.



Thank you

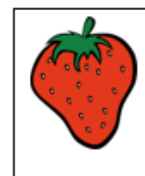
Paper Bags	15c		
Tomato/BBQ Sauce	50c		
Sandwiches and Wraps		Hot Food	
Add 50c for rolls or toasting			
60Buttered Roll	\$2.70	Sausage Roll	\$3.80
Vegemite	\$2.90	Party Pies	\$1.60
Vegemite and Cheese	\$4.00	Hotdogs	\$4.40
Cheese	\$3.80	Hawaiian Pizza	\$4.40
Ham	\$3.80	Chicken Nuggets x 3	\$2.80
Ham 'n' cheese	\$4.40	Chicken Nuggets x 6	\$5.50
Ham, Cheese 'n'	\$4.90	Chicken Burger	\$5.50
Tomato		Chicken Burger 'n' Cheese	\$6.00
Egg 'n' Lettuce	\$5.50	Lasagne	\$5.50
Ham 'n' Salad	\$7.50	Spaghetti	\$5.50
Chicken 'n' Salad	\$7.50	Steamed Dims Sims	\$1.30
Salad (no meat)	\$6.00	Corn on the Cob	\$1.10
Salad contains: Cheese, beetroot, tomato, cucumber, carrot, lettuce, celery		Chicken Tender Wrap	\$6.00
Egg extra 50c		(Lettuce, tomato and choice of mayo or chilli sauce)	
Boiled egg	\$1.10	Hot chicken roll w/cheese	\$5.50
		Hot chicken roll w/gravy	\$6.00
Drinks		Halal Items	
Water – Large	\$1.30	Hot dogs	\$4.40
Water - Small	\$1.00	Nuggets	3 for \$2.80 6 for \$5.50
		Salad Tubs	
		Small Salad Tub	\$6.60
		Fruit Salad	\$7.70

Snacks

BBQ Snaps = \$2.00
Vege Snaps = \$2.00
Butter Popcorn = \$1.50
Original Popcorn = \$1.20
JJ's = \$1.50
Petzels = \$1.00
Assorted muffins = \$1.00
Piklets & sprinkles = 50 cents

Fruit Snacks

Watermelon = 50 cents
** Rockmelon = 50 cents)
** Honeydew = 50 cents)
** Grape = 10 cents) ** Seasonal fruit **
** Strawberry = 10 cents)
** Kiwi Fruit = 10 cents)
Kabana = 10 cents
Cheese = 10 cents
Wafer Biscuits = 20 cents



Prices as of Monday 10th July 2023