



BELL PARK NORTH PRIMARY SCHOOL

NEWSLETTER #3, Monday 4th March 2024

Principal:

Anthea Lagadinos



Assistant Principal:

Christopher Cox



TERM 1

North Geelong Secondary College
Grade 5/6
Wednesday 6th March

Labour Day Holiday
Monday 11th March
No School

Cross Country
Tuesday 12th March
Whole School

NAPLAN
13th March to 21st March
Grades 3 & 5

Harmony Day
Thursday 21st March

Easter Hat Parade
Thursday 28th March, 9am

Easter Raffle
Thursday 28th March

Last Day Term 1
Thursday 28th March
Finish 2:10pm

FROM THE PRINCIPAL.....

Dear Parent / Carers,

***FOUNDATION STUDENTS ATTEND SCHOOL ON WEDNESDAYS STARTING THIS WEEK**

Great Week

We have enjoyed another positive week with our learning programs in full swing now. Children are doing well and enjoying their time at school.

**OFF TO A
Great Start**



Grade Area News Item

This week the Year 1/2 and Year 3/4 children share their learning experiences with you in their Area News items. We hope you enjoy reading it.

School Council Nominations

Thank you to the parents who nominated for school council.

The election process for the 2024/2025 School Council Positions has now closed and been finalised.

Congratulations to the following parents who nominated and were elected unopposed for 2024 /2025:

- Bek Edwards
- Pardeep Kumar
- Chloe Athanasakos
- Lisa Osborne
- Joanne Stokoe

Congratulations to the following parent who nominated and was elected unopposed for 2024:

- Kiara Campisi

Congratulations to the following staff member who nominated and was elected unopposed for 2024 /2025:

- Emily Chappell

Congratulations to the following staff member who nominated and was elected unopposed for 2024:

- Gemma O' Dea



Bell Park North Primary School F-6



Vision Statement

Our Vision: "Together We Achieve"

At Bell Park North Primary School, our staff, children and parents work together to support the social, emotional and academic learning of all students in our care.



Our Values

Values which form the basis of our actions are:

Friendship

Respect
Integrity
Equality
Never Give Up
Do Your Best
Safety

**Term 1 Value
"Friendship"**

School Council President:
Rebecca Hunt

PO Box 244 North Geelong 3215

Ph. 5278 3548 Fax 5278 4418

www.bpnps.vic.gov.au

bell.park.north.ps@education.vic.gov.au

I look forward to working with the following parents and teachers who will make up the 2024 School Council.



Parents:

Returning Councillors

Robert Reid
Natalie Davis

Elected Unopposed (Two Years)

Bek Edwards
Pardeep Kumar
Chloee Athanasakos
Lisa Osborne
Joanne Stokoe

Elected Unopposed (One Year)

Kiara Campisi

Staff:

Returning Councillors

Christopher Cox

Elected Unopposed (Two Years)

Emily Chappell

Elected Unopposed (One Year)

Gemma O'Dea

Executive Officer: Anthea Lagadinos



We extend our thanks to outgoing councillors Rebecca Hunt, Keira Gibbs, Cassie Isaacs, Jade Antonac, Ravinder Kumar, Beth Carey and Selina Roosje for their time and effort in their roles on School Council. A special thank you again to Rebecca Hunt for her years of service as President of our School Council.

Labour Day Holiday

Next Monday 11th March is the Labour Day Public Holiday. **Students do not come to school on this day.** Please mark this on your calendars as there will not be staff in attendance on this day.



School Nursing Program

The Primary School Nurse from the Primary School Nursing Program will be visiting our school between Thursday 14th March - Friday 22nd March 2024 to:

- Assess all Prep children with parental consent and other children referred to the school nurse in Grades 1-6
- Assess children who have newly arrived from overseas
- Follow up with children where school nurse intervention was previously required
- Provide advice and health information

Prompt completion of the online School Entrant Health Questionnaire would be appreciated if you have not already done so. (The questionnaire provides parents/guardians with the opportunity to raise any concerns with the school nurse they may have about their child's health and development.)



Entering School Grounds and Buildings

Another reminder that any parent/visitor to our school must come to the office first to check in. This is Department of Education legislation. Parents are not allowed to go

straight down to classrooms without checking in at the office first. We greatly appreciate your support with this.



Uniform

Just another friendly reminder that only School Council approved uniform items purchased from Bellarine Uniforms or the approved navy pants / shorts from Target are acceptable for children to wear. If for any reason, be it financial or other, you are having difficulty accessing the correct uniform



items for your children please come and see us at the office. There is absolutely no reason why all children should not be able to be wearing uniform according to school policy. Please remember that black clothing items, leggings and bike shorts are not appropriate at all.

Being COVID-Safe

The Department of Health **strongly recommends** that students and school staff:

- who test positive to COVID-19 stay home and isolate for 5 days and do not attend school after 5 days if they are still symptomatic.
- who are symptomatic but have not tested positive not attend school. This does not include students with pre-existing conditions such as hay fever.



Parents and carers are recommended to continue to report their child having COVID-19 to both the school and the Department of Health.

We will, however, no longer report occurrences of positive cases to the school community.

We ask parents and carers to continue to remain vigilant in preventing COVID-19 transmission. Any student who is unwell should continue to remain at home. This is about keeping students healthy and well in our school and reducing the spread of both COVID-19 and other respiratory diseases.

Parents and carers will be contacted if their child shows symptoms while at school. Students who wish to wear a mask should continue to do so. To keep our school as safe as possible, we will also continue to use air purifiers and other COVID-19 prevention measures.

A packet of Rapid Antigen Tests (RATS) were sent home to each family last week. We appreciate and thank you for your continued efforts to keep our school community safe and well.

Anthea Lagadinos
Principal

Friendly Reminders:

- **Newsletters will be posted in COMPASS every second Monday.**
- **Full school uniform must be worn every day.**
- **Children must wear hats between the months of September and May or when the UV index is 3 or above.**
- **It's Not Okay to Be Away or Late to School as "Every Day Counts"**



1/2 Term 1 Newsletter

Hello Parents and Guardians,

Over the last two weeks the grade 1/2 students have been working on Robotics in the gym. The students have been exploring the basics of Robotics by creating a robot animal that moves a body part. They have been amazed at the different parts used to create a robot and how to make them move.

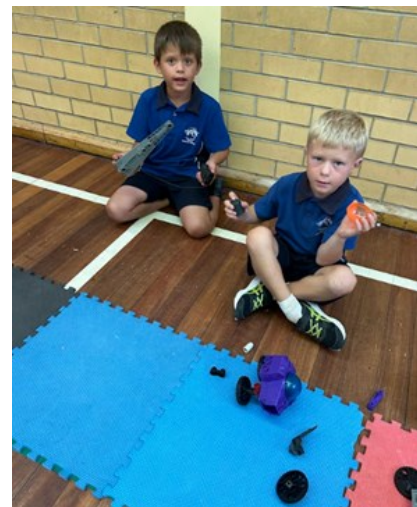
Our young engineers have been working collaboratively in pairs to problem-solve and think critically about how to build the robots and make them move. They have shown great creativity and perseverance when experimenting with different parts to create an animal robot.

We are impressed by the enthusiasm and curiosity our students have shown towards robotics this term. We are proud of their efforts and their collaboration skills during this activity.

Sincerely 1/2 team,

Mr Greenwood, Miss Cammarere, Mrs Davies, Mrs Pfeiffer and Mr Stoop

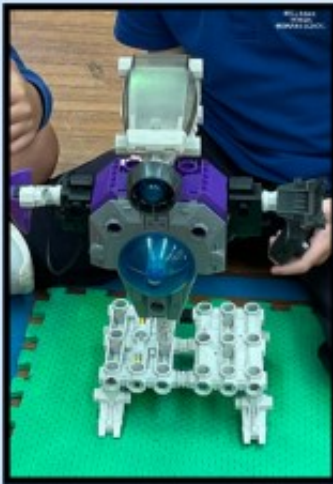


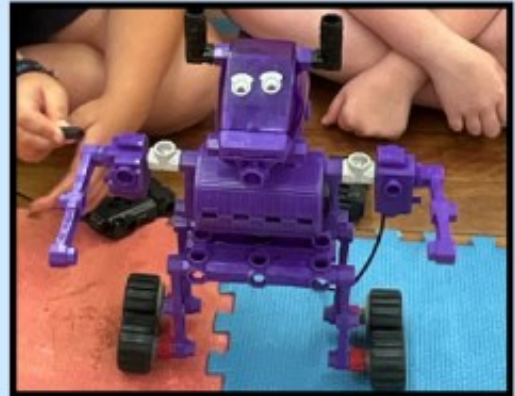


3/4 ROBOTICS

HAVE YOU EVER SEEN A DANCING ROBOT?

ROBOTICS IS BACK IN 2024! THIS TIME OUR GRADE 3/4 STUDENTS HAD TO PUT THEIR CREATIVE DESIGN SKILLS TO THE TEST AND CREATE A ROBOT PROGRAMMED TO ENTERTAIN! THE TASK WAS INSPIRED BY A DANCING ROBOT WHICH HAD BEEN PROGRAMMED WITH A COMPLETE DANCE ROUTINE THAT INCLUDED SOMERSAULTS AND HANDSTANDS!





From the School Office



COMPASS ON LINE - What's new in 2024

Bell Park North P.S. is continuing to streamline procedures through Compass. In 2024 the following will be available for Parents.

2024 Parent Payment Arrangements

Schools provide students with free instruction to fulfil the standard Victorian curriculum and we want to assure you that all contributions are voluntary. Nevertheless, the ongoing support of our families ensures that our school can offer the best possible education and support for our students. We want to thank you for all your support, whether that's through fundraising or volunteering your time. This has made a huge difference to our school and the programs we can offer. Within our school this support has allowed us to provide some extra funds into topping up the curriculum budgets, purchase a few digital devices and has contributed to cover the cost of heating/cooling units in our gym to make its use more suitable to the students learning needs and versatile in how we use it.

2024 Curriculum Contributions

Foundation Students = \$180 (Curriculum & Other Contributions)

Grade 1 to Grade 6 Students = \$170 (Curriculum & Other Contributions)

These will be listed through the Payments Centre on Compass.

Student Annual Permissions

The 2024 Student Annual Permissions will be available through Compass. These permissions should be available for consent at the end of this week.

Continuing in 2024

Excursions/Camps

All excursions/incursions/camps permissions and payments will be through the Payments Centre on Compass.

Canteen online (Canteen open on Wednesday, Thursday & Friday) of each week.



Camps, Sports and Excursions Fund applications

The Camps, Sports and Excursions Fund (CSEF) helps eligible families to cover the costs of school trips, camps and sporting activities.

If you have a valid means-tested concession card, such as a Veterans Affairs Gold Card, Centrelink Health Care Card or Pensioner Concession Card, or are a temporary foster parent, you may be eligible. There is also a special consideration category for asylum seeker and refugee families.

Payment amounts this year are \$125 for eligible primary school students and \$225 for eligible secondary school students. Payments are made direct to the school to use towards expenses relating to camps, excursions and sporting activities for the benefit of your child.

It is important that funding made available in 2024 supports students to participate in school trips, camps and sporting activities this year rather than being held for future years. This funding can also be used in conjunction with any funding accrued from previous years.

If you applied for CSEF through our school last year, you do not need to complete an application form this year, unless there has been a change in your family circumstances. If you transferred to Bell Park North Primary School during 2023 and you received CSEF at your previous school, you must apply at Bell Park North P.S. for 2024.

If you would like to apply for the first time, please contact the school office on 5278 3548 and ask for an application form.

Check with the school office if you are unsure, and please return completed forms to the school office as soon as possible.

Breakfast Club

As our need for Breakfast Club is growing we are in desperate need of Margarine, Milo and Jam. Any donations of these items would be greatly appreciated. Thanks, Susie Harvey, Breakfast Club Co-ordinator



Annual Privacy Reminder for our school community

Our school collects, uses, discloses and stores student and parent personal information for standard school functions or where permitted by law, as stated in the [Schools' Privacy Policy](#).

Our Photographing, Filming and Recording Students policy <https://www2.education.vic.gov.au/pal/photographing-students/policy> shows how we collect and use photographs, video and recordings for students. The policy also explains when parent consent is required and how it can be provided and withdrawn.

We ask to also review the guidance we provide on how we use {Microsoft 365/Google Workspace for Education} safely at school and what parents can do to further protect their child's information. If after reviewing the guidance, you have any questions or concerns regarding your child using Microsoft 365/Google Workspace for Education} please contact the school.

For more information about privacy, refer to: [Schools' Privacy Policy — information for parents](#). This information is also available in ten community languages:

- Amharic
- Arabic
- Dari
- Gujarati
- Mandarin
- Somali
- Sudanese
- Turkish
- Urdu
- Vietnamese.

Welfare Corner



Our children are so precious and at this young age they are impressionable, they learn from their parents, other family members, school staff and other significant adults in their lives. I want to share a poem that shows how important the things we teach children are:

CHILDREN LEARN WHAT THEY LIVE

Dorothy Law Nolte



If a child lives with criticism, he learns to condemn.

If a child lives with hostility, he learns to fight.

If a child lives with ridicule, he learns to be shy.

If a child lives with shame, he learns to feel guilty.

If a child lives with tolerance, he learns to be patient.

If a child lives with encouragement, he learns confidence.

If a child lives with praise, he learns to appreciate.

If a child lives with fairness, he learns justice.

If a child lives with security, he learns to have faith.

If a child lives with approval, he learns to like himself.

If a child lives with acceptance and friendship, he learns to find love in the world.

Weekly Awards

Week Ending 23rd February 2024

Grade	Student	Reason for Award
Foundation C Mr Cleeland	Logan Verhoef	For the effort he puts into his learning each session. Logan is trying extremely hard to follow instructions and to stay on task for the entire session. Congratulations Logan!
Foundation E Mrs Chappell	Lachlan Maloney	Lachlan is a great role model for the rest of the class! He follows our school's expectations and values, always uses his manners and is a great friend to his classmates. Congratulations Lachlan, keep up the great work!
Foundation O Miss O'Dea	Layla Bracken	For making an excellent start to foundation. Layla has a positive and cheerful attitude towards her learning. Keep up the awesome job Layla!
1/2 C Miss Cammarere	Harper Jelenic	For coming to school ready to learn and with a positive attitude towards her learning and always trying her best with everything she does. Harper is consistently demonstrating kindness to her peers and is one of the first to lend a helping hand when needed. Keep up the great work Harper!!
1/2 D Mrs Davies	Grace Beggs	Congratulations Grace on being such an enthusiastic learner and a kind friend. You have participated fully in all classroom conversations and have made some wonderful predictions about texts. Keep up the AMAZING work! Well done Grace!
1/2 G Mr Greenwood	Alisha Negi	For always working hard in class. Alisha works hard and completes her work to the best of her ability. She has been making great predictions and writing great sentences this week. Keep up the great work Alisha!
1/2 P Mrs Pfeiffer	Royce Grant	His strong recent Spelling results. Also, for using decimal numbers in our Place Value lessons and explaining their values. Royce has helped others in class and is an excellent role model. Well done, Royce!



Weekly Awards

Week Ending 23rd February 2024

Grade	Student	Reason for Award
1/2 S Mr Stoop	Luka Michels	For hard work this week in his Literacy achievements. Luka has shown our school values of “Never give up” and “Do your best”. Well done and keep working hard.
3/4 A Mrs Allan	Guruleen Kaur	For settling in extremely well to a new school and new country. Guruleen is a hard-working student and consistently shows our school values of friendship, respect and doing your best. Excellent work Guruleen, keep it up!
3/4 G Mr Gear	Noah Weymouth	For his outstanding engagement towards learning. Noah’s enthusiasm, resilience and persistence towards reading, writing and maths has created terrific learning experiences and outcomes. Keep bringing that awesome energy to the classroom Noah!
3/4 P Miss Pither	Tyrese Patching	For the amazing work he put into creating his Chinese Dragon during Robotics this week. Tyrese did an amazing job using motors to move the head and tail of his dragon. Great work Tyrese!
5/6 C Mrs Climpson	Jazmin McQueen	For having such a positive transition into grade 5. She has been attempting all set tasks and working hard to improve in all areas, especially writing. Jazmin has been listening to the feedback given to her and applying it to her work. Well done Jazmin!
5/6 N Ms Neale	Jayson Stannard	Displaying the school values on a daily basis. Jayson is a quiet student who always contributes to class discussions and works hard to complete his work to a high standard. This week Jayson worked hard on improving his sentence structure in his narrative writing. Excellent work Jayson!
5/6 P Mr Pedersen	Miah Young	For demonstrating a ‘Never Give Up’ attitude so far this term. Miah has been communicating efficiently with her teacher to support her learning when confronted with a challenge during class sessions. Well done Miah!



Weekly Awards

Week Ending 23rd February 2024

Grade	Student	Reason for Award
PE Mr Gibson	Cooper Kingsbury	For his positive attitude and friendly nature when competing against other schools in the Volleystars Lightning Premiership. Cooper was a great team player and a fantastic role model for our school. Keep it up Cooper!
Media Arts Mr Gibson	Olivia Albert	For the time and effort she put into her pastel artwork this week. Olivia used a range of blending and colouring techniques to create an engaging landscape. Great work Olivia.
STEM Mr Lundstrom	Lily Balaz	Lily's imaginative design for a machine that can produce any daily-life tool or product is truly inspiring. Her careful attention to detail and joy in her work are both admirable and fascinating. Lily's creativity, dedication and "do your best" attitude make her shine like a superstar. Keep up the fantastic work, Lily!
PE Mr Lundstrom	Benish Hussain	Benish had a smashing day at the Lightning Premiership held at the South Geelong Volleyball Centre. Representing Bell Park North Primary School, she embodied our school values throughout all her matches, serving as a true role model. Benish's sportsmanship, kindness, and skill were inspiring to witness both on and off the court. Congratulations, Benish, on your outstanding efforts. You should be very proud of yourself!
JAPANESE Mrs Matthews	Lily Balaz	For trying her best and participating in Japanese this week. Lily practised introducing herself to her peers and wrote it neatly in hiragana. Well done Lily! Keep up the fabulous effort!
Green Team Mr Stoop Miss Pither	Lorah Nichols	For using recycled materials to create projects to help promote environmental awareness in our school and community.



Weekly Awards

Week Ending 1st March 2024

Grade	Student	Reason for Award
Foundation C Mr Cleeland	Phoenix Laird	For the progress he has made when transitioning into school each morning. Phoenix has developed a positive mindset when arriving at school and has worked hard to engage in his learning as soon as he arrives. Congratulations Phoenix!
Foundation E Mrs Chappell	James Moodie	For an amazing start to school! James comes to school with a smile on his face each day and is ready to learn. He tries his best with all his tasks and encourages others to do the same. Keep it up James, congratulations!
Foundation O Miss O'Dea	Jayarah-Lee Gaylard	For always contributing to class discussions and always being respectful towards her peers. Keep up the awesome work Jayarah!
1/2 C Miss Cammarere	Areeha Batool	For the positive attitude she displays towards her learning. Areeha listens carefully, contributes to class discussions and always tries her hardest to achieve her personal best. Congratulations Areeha!
1/2 D Mrs Davies	Isabelle Kershaw	Congratulations Isabelle on being such a happy and cheerful member of our class! You brighten every day with your smile and your amazing colourful artworks. Well done Isabelle!
1/2 G Mr Greenwood	Alirah Rybinski	For making a fantastic start to her new school. Alirah has been an active contributor to classroom discussion and has been showing all our school values. Congratulations on a great start at Bell Park North. Keep up the great work Alirah!
1/2 P Mrs Pfeiffer	Lily Balaz	For her varied and interesting sentences in our Writing sessions. For being a great helper in our class. Keep up the great work Lily and keep smiling!



Weekly Awards

Week Ending 1st March 2024

Grade	Student	Reason for Award
1/2 S Mr Stoop	Elysse Ivory	For consistently showing the school value of "Friendship". Elysse is a kind and caring friend who always checks in with others. She is always willing to help her peers. Well done Elysse.
3/4 A Mrs Allan	Siennah Watkinson	For working extremely hard in writing. Siennah planned, drafted, edited/revised and published a piece titled 'The Day the Chairs Quit!'. Excellent work Siennah!
3/4 G Mr Gear	Abby Wastell	For her positive attitude towards learning. Abby has consistently approached learning experiences with persistence, especially in maths where she has challenged herself and reflected our school value 'Never Give Up'. Outstanding work Abby!
3/4 P Miss Pither	Adrian Collins-Dunford	For his amazing piece of writing using Hyperbole. Adrian used some great exaggeration in his short story about how much he hates pickles. Great writing Adrian, Keep it up!
5/6 C Mrs Climpson	Cooper Kingsbury	For always displaying the school values in all that he does. Cooper is a kind, caring and helpful member of our class. He is always willing to assist anyone who requires extra help/support. Cooper always shows respect to his teachers and peers. Keep up the amazing work Cooper.
5/6 N Ms Neale	Grace Antonac	Grace is an exceptional student who demonstrates all the school values on a daily basis. She always tries her best in Reading, Writing and Maths. This week Grace challenged herself by participating in the Cricket Lightning Premiership Competition where she never gave up and represented our school proudly. Fantastic work Grace!
5/6 P Mr Pedersen	Zach McKinnin	For his focus and commitment to his own learning approach in Term One. Zach has been an active member in all of our morning circle sessions and he's been sharing his thoughts with his peers during class sessions as well. Keep up the good work Zach !!

**AWESOME
WORK**

Weekly Awards

Week Ending 1st March 2024

Grade	Student	Reason for Award
PE Mr Gibson	Hayden Rees	For his hard work and team spirit when competing at the Cricket Lightning Premiership. Hayden's positivity and encouragement toward his teammates inspired other students to achieve their personal best.
Media Arts Mr Gibson	Aileen Aggarwal	For the creative ideas she implemented in her one-point perspective drawing. Aileen designed a range of interesting characters to create an engaging narrative within her artwork.
STEM Mr Lundstrom	Ivy Antonac	Ivy did a great job in STEM this week. She used her prior knowledge about magnets in her projects and shared her discoveries with her friends. It's awesome to see her so interested and involved in science and learning. Keep up the good work, Ivy!
PE Mr Lundstrom	Grace Antonac	Your exceptional courage and talent displayed at the Lightning Premiership Cricket competition at Kardinia Park have earned the admiration of the teachers at Bell Park North. Your contributions make you a valued member of our school community, and you serve as an inspiring role model for all our students. Congratulations, Grace, on your outstanding efforts. You should be very proud of yourself!
JAPANESE Mrs Matthews	Mason Witney	For his enthusiasm and support in our Japanese lesson this week. Mason was eager to share answers and ideas with the class and demonstrated responsibility by assisting his peers.
Green Team Mr Stoop Miss Pither	Gurdev Sharma	For his consistent work in keeping our school and community clean by picking up litter.



SCHOOL SMOKING AND VAPING BAN

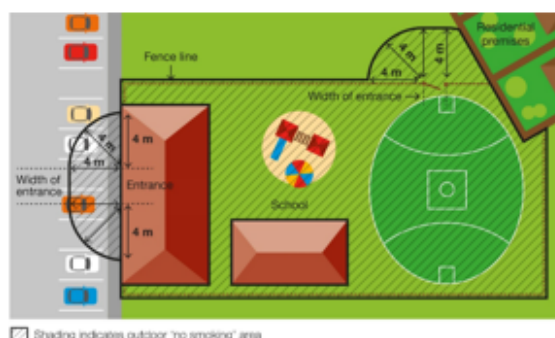
By law, smoking and vaping are banned within the grounds of, and within four metres of an entrance to, all childcare centres, kindergartens, preschools and schools.

WHERE THE BAN APPLIES

The smoking and vaping ban applies to:

- anyone present on school premises during and outside of school hours including students, teachers, contractors, parents or carers or the wider community, such as sporting groups
- all activities that take place on school premises including pre-schools, kindergartens, outside school hours care, cultural, sporting or recreational activities and school fetes

Smoking and vaping are also banned within four metres of any part of a pedestrian access point (entrance) to the premises.



The diagram adjacent shows an example of where the smoking ban applies at a school.

WHEN THE BAN APPLIES

The smoking and vaping ban applies at all times, no matter whether the building or school grounds are being used for education purposes or other purposes. The ban therefore applies when other activities are taking place on the school grounds, such as fetes or sporting events, as well as during school hours.

WHY THE BAN EXISTS

To protect children and young people from the dangers of second-hand smoke and vapour

This ban ensures that children and young people can enter and leave these areas without being exposed to harmful second-hand smoke and vapour. Their health is particularly at risk because they have smaller airways and less developed immune systems compared to adults.

To reduce the role modelling of smoking and vaping behaviours around children and young people

Children and young people are more likely to view smoking and vaping as socially acceptable when they regularly see people doing it.

Banning smoking and vaping in areas used by children and young people will discourage children and young people from using tobacco or e-cigarette products.

DEFINING A PEDESTRIAN ACCESS POINT

A pedestrian access point in relation to premises means a door or gate by which a person can enter or exit the premises. It *does not* include an emergency exit that is locked to entry.

It *does* include shared doors or gates. For example, where a building is occupied by a childcare centre as well as other organisations, such as private businesses, any shared entrances that are used to access both areas of the building would be subject to the smoking ban.

Any entrances which lead only to premises not included in the smoking ban, such as the private offices, would not be subject to the smoking ban.

WHAT PENALTIES APPLY

Fines are described under law in penalty units. From 1 July 2020 to 30 June 2021, a penalty unit is valued at \$165.22.

The penalty for breaking school smoking and vaping ban laws is a court fine of a maximum of five penalty units (\$826 as of 1 July 2020) or an infringement fine of one penalty unit (\$165 as of 1 July 2020).

The value of a penalty unit is set annually by the Department of Treasury and Finance and is updated on 1 July each year. For current penalty unit values, visit the Department's [website](http://www.dtf.vic.gov.au/financial-management-government/indexation-fees-and-penalties) <www.dtf.vic.gov.au/financial-management-government/indexation-fees-and-penalties>.

FOR MORE INFORMATION

For more information:

- visit the [tobacco reforms website](http://www.health.vic.gov.au/tobaccoreforms) <www.health.vic.gov.au/tobaccoreforms>
- call the Tobacco Information Line on 1300 136 775

To view the legislation visit the Victorian Government's [legislation website](http://www.legislation.vic.gov.au) <www.legislation.vic.gov.au> and search *Tobacco Act 1987*.

© State of Victoria (Department of Education and Training) 2020. Except where otherwise noted, material in this document is provided under a [Creative Commons Attribution 4.0 International](#) license. Please check the full [copyright notice](#).

Parents and prospective students are warmly invited to our

Open Night

Wednesday 13th March, 2024

Commencing 6.00pm



Presentation
6.00 – 6.20pm

Self-guided tours
and specialist
information sessions
6.30 – 7.30pm

Details of our Select Entry Accelerated Learning,
Scholarships and Excellence in Sport Programs
will be provided at the Open Night.



NORTH GEELONG SECONDARY COLLEGE

130 Separation Street, North Geelong, Victoria 3215

P +613 5240 5800

E north.geelong.sc@education.vic.gov.au

www.ngsc.vic.edu.au



www.facebook.com/northgeelongsc



Year 7 Enrolment Information Evening
Tuesday 5 March, 2024 from 6:00pm to 7:30pm

Open Day Tours
Wednesday 6 March, 2024: 9:30am to 10:30am

**Selected Entry Advanced Learning
Program Information Evening**
Tuesday 26 March, 2024: 6:30pm to 7:30pm

For further information, contact our office on
(03) 4243 0500 or
matthew.flinders.girls.sc@education.vic.gov.au



MFG
Matthew Flinders
Girls Secondary
College



Bookings now open!

	Monday - Friday Hours of Operation	Fees before Child Care Subsidy*	Out-of-pocket fees after Child Care Subsidy**
Before School Care (BSC)	6:45 AM to 8:45 AM	\$20.81	\$2.08
After School Care (ASC)	3:10 PM to 6:00 PM	\$28.47	\$2.85
Pupil Free Day	6:45 AM to 6:00 PM	\$71.18	\$7.12
Holiday Program***	6:45 AM to 6:00 PM	\$71.18	\$7.12

*Standard fee costs **before** Child Care Subsidy / ** Standard fee costs **after** maximum Child Care Subsidy / *** Standard fee costs **excluding** incursions/excursions

Cancellation Fees

(No Child Care Subsidy applied to Cancellation Fees)

BSC/ASC within **24 hours** of session start time: **\$4.00**

Holiday Program within **5 days** of session start time: **\$10.00**

Same day cancellation fee is out-of-pocket session fee.

Late Booking Fees

(Child Care Subsidy is applied to Late Booking Fees)

BSC/ASC within **24 hours** of session start time: **\$4.00**

Holiday Program: book less than **5 days** from the session start time fee is **\$10.00**

Late Pick-up Fees

(Child Care subsidy does not apply to Late Pick-up Fees)

\$1 per minute after service close time.

To register visit theircare.com.au

Service Phone number:
0484 311 882

Your service Coordinator will be available during session times.

Save up to 90% With the Child Care Subsidy!



TheirCare support team is available between 6.30am - 9pm weekdays (Eastern Standard Time)
on **1300 072 410** or **info@theircare.com.au**

NEWSLETTER TERM 1 EDITION 3

We acknowledge the Traditional owners of the land, the Wadawurrung Peoples of the Kulin Nation and pay our respect to their Elders, past, present and emerging.

The past fortnight has been eventful! We enjoyed the family fun night where our educators ran the sausage sizzle!



We have enjoyed our afternoon tea, having tomato soup and garlic bread for the first time in after school care! To cool down from the hot weather the children chose a flavour and enjoyed their slushies!



Using sand the children have created their own 'beach' artworks. The children created extra long rainbow loom bands and enjoyed using the new 'Pop it' game. They've been creative in making their own fort using the furniture and materials at after school care.



SESSION TIMES
BEFORE SCHOOL CARE: 6:45AM - 8:45AM
AFTER SCHOOL CARE: 3:10PM - 6:00PM
PUPIL FREE DAY 6:45AM - 6:00PM
HOLIDAY PROGRAM: 6:45AM - 6:00PM

For any questions feel free to contact us
on 0484 311 882 or
bellparknorth@theircare.com.au

The place to be these holidays!

ART ATTACK

autumn
HOLIDAY PROGRAM



Kung Fu Panda 4



Art Experience



School of Rock



Colour Run

Book now at theircare.com.au
Save up to 90% with the Child Care Subsidy

Holiday Program Important Information!

What to bring

- ☐ A healthy morning tea and lunch
- ☐ A labelled drink bottle for water
- ☐ Suitable clothing for an active day – closed toe shoes and jacket if wet/cold
- ☐ SunSmart hat for Spring and Summer holidays
- ☐ Medical Management Plan & Medication if applicable – see below for details

Don't forget!

- ☐ Keep your lunchbox nut-free to keep everyone safe
- ☐ Do not include food items that need to be reheated
- ☐ Label all items with child's name!
- ☐ Bus departure and arrival times are indicative only. For an accurate estimated time of arrival and departure please contact your service directly.

Personal belongings

Electronic devices, money and other valuables should be left at home.
If brought to the service, these items remain the responsibility of the family. TheirCare does not accept responsibility for loss or damage.

TheirCare provides

- ☒ Breakfast and afternoon tea snack
- ☒ Sunscreen
- ☒ Water to refill bottles

Child Care Subsidy

Please note that subsidised hours are calculated and allocated by Centrelink on a fortnightly basis. Check Centrelink for eligibility. Each session is calculated using the full service operational hours, not the hours attended by the child.

Unexpected changes to activities

In the unlikely event that an activity is unable to run, an alternative activity will be provided. Activities and times are subject to change due to unforeseen circumstances such as severe weather or provider availability. If an alternative cannot be sourced we will update your invoice to reflect this.

Serious stuff!

Medical Management Plan & Medication

All children who have been diagnosed with a medical condition including allergies, food/chemical intolerances, anaphylaxis, asthma, epilepsy will need to provide:

- ☐ a completed Medical Management Plan with a colour photo
- ☐ necessary medication

Please note it is a legal requirement under the Education & Care National Regulations and the Terms and Conditions for booking that these are provided.

In the interests of child safety, care may be refused on the day should the appropriate documentation or medication or medication not be supplied.

Changes to your booking

Simply log into your account anytime to make the relevant changes or call us between 8:30am – 9:00pm weekdays on 1300 072 410.

Fees for changes to your booking

More than 5 days	Less than 5 days *	On the day
No Charge	\$10.00	Full Fee

*Less than 5 days from the start of the booking (120 hours from the start of the session).

When making additional bookings, the \$10.00 fee is eligible for the Child Care Subsidy, which means you may only need to pay the gap, depending on your families' circumstances.

If you have any questions, please speak with one of our friendly Educators or call Customer Support on 1300 072 410.



TheirCare
where Kids love to be!

Bell Park North PS TheirCare
Times 6:45AM - 6:00PM
Location 16-26 Barton Street, BELL PARK VIC 3215
Call 0484 311 882

*With the maximum CHILD CARE SUBSIDY. **Without the CHILD CARE SUBSIDY.

There are 2 types of Child Care Payments.

1. Child Care Subsidy

The amount you can get depends on:

- 1 your family's income
- 2 the type of childcare you use
- 3 the age of your child
- 4 the hours of recognised activities you and your partner do

2. Additional Child Care Subsidy

This is **extra support** for some families including:

- 1 grandparents / great grandparents
- 2 families moving from an income support payment to work
- 3 those experiencing temporary hardship

Claim these subsidies
via **myGov**

For more information, call Theircare on 1300 072 410

Up to
90%
of Child Care costs
can be covered
by Child Care
by Child Care
by subsidy!



Excursion & Super Excursions days: Arrive at the service by 9:00 am. Pick-up after 2:30 pm. Wear runners & socks.

FRIDAY

THURSDAY

WEDNESDAY

TUESDAY

MONDAY

5 APR



Spotlight Spectacular

Step into the spotlight with this stonemaster! Get your groove on with a Dance Party inspired by 1960s music. Play the fun keeps going... Play the Pass the Sound group game, create your own unique theatre puppets, and then take on the Count to 10 Challenge and the Space Jump Improve game!

From as low as \$7.18**
Full fee \$71.18**

4 APR



Make it Messy!

Embrace your messy and creative side! Anything goes with the Anything but a Paintbrush challenge as you create works of art, but no paintbrushes allowed! unleash your creativity and create amazing Clay Nature Prints, Symmetry Painting, Straw Face Painting and take part in a Fruit Basket Group Game!

From as low as \$7.18**
Full fee \$71.18**

3 APR



Circus Shenanigans

Step right up to the enchanting world of the Great Moscow Circus! This super excursion will see you marvel at breathtaking aerial performances, hilarious clowns, and daring tricksters under the Big Top. Extend the fun with Crown Pinner Craft and engage in a lively round of Animal Tag!

From as low as \$12.45**
Full fee \$124.45**

2 APR



Rainbow Rush

Get ready for a burst of colour! Dash through a vibrant spectrum in this lively Rainbow Warriors Colour Run! After the sun, tap into your artistic side with Rainbow Cotton Ball Painting, press refresh with a yummy Mango Mayhem Smoothie, partake in a zen Yoga session, and get hands-on with Rainbow Cloud Sticks!

From as low as \$10.00**
Full fee \$100.00**

1 APR



Public Holiday!

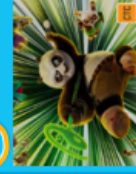


From as low as \$10.00**
Full fee \$100.00**

TUESDAY

MONDAY

9 APR



Movie Magic

This autumn, for the first time in almost a decade, comedy icon Jack Black returns to his role as Po, the world's most unlikely kung fu master, with a hilarious, butt-kicking new chapter in DreamWorks Animation's beloved action-comedy franchise, Kung Fu Panda 4.

From as low as \$11.34**
Full fee \$113.40**

8 APR



Tote-ally Art!

It's time to bring some colour to the streets! Create wearable works of art with your very own DIY tote bag that you get to take home! In addition to crafting, amp up the fun with Best Jumping, showcasing your rhythm and coordination. Bust a move with Hip Hop Dance Moves and experience a tasty twist with Lemon Volcanoes.

From as low as \$7.18**
Full fee \$71.18**

WEDNESDAY

THURSDAY

FRIDAY

10 APR



ArtBlast Galaxy

We are ready for lift-off! Launch your creativity into the stars and create unique patterns with Paint Pencils, dive into cosmos with Galaxy orbz, and tackle 'Minute to Win It' Art Challenges. Engineer wonders with LEGO STEM Construction, fold back into every corner with Origami Lucky Stars.

From as low as \$7.18**
Full fee \$71.18**

9 APR



Movie Magic

This autumn, for the first time in almost a decade, comedy icon Jack Black returns to his role as Po, the world's most unlikely kung fu master, with a hilarious, butt-kicking new chapter in DreamWorks Animation's beloved action-comedy franchise, Kung Fu Panda 4.

From as low as \$11.34**
Full fee \$113.40**

8 APR



Tote-ally Art!

It's time to bring some colour to the streets! Create wearable works of art with your very own DIY tote bag that you get to take home! In addition to crafting, amp up the fun with Best Jumping, showcasing your rhythm and coordination. Bust a move with Hip Hop Dance Moves and experience a tasty twist with Lemon Volcanoes.

From as low as \$7.18**
Full fee \$71.18**

10 APR

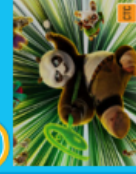


ArtBlast Galaxy

We are ready for lift-off! Launch your creativity into the stars and create unique patterns with Paint Pencils, dive into cosmos with Galaxy orbz, and tackle 'Minute to Win It' Art Challenges. Engineer wonders with LEGO STEM Construction, fold back into every corner with Origami Lucky Stars.

From as low as \$7.18**
Full fee \$71.18**

9 APR



Movie Magic

This autumn, for the first time in almost a decade, comedy icon Jack Black returns to his role as Po, the world's most unlikely kung fu master, with a hilarious, butt-kicking new chapter in DreamWorks Animation's beloved action-comedy franchise, Kung Fu Panda 4.

From as low as \$11.34**
Full fee \$113.40**

8 APR



Tote-ally Art!

It's time to bring some colour to the streets! Create wearable works of art with your very own DIY tote bag that you get to take home! In addition to crafting, amp up the fun with Best Jumping, showcasing your rhythm and coordination. Bust a move with Hip Hop Dance Moves and experience a tasty twist with Lemon Volcanoes.

From as low as \$7.18**
Full fee \$71.18**

10 APR

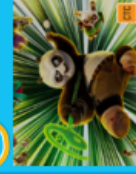


ArtBlast Galaxy

We are ready for lift-off! Launch your creativity into the stars and create unique patterns with Paint Pencils, dive into cosmos with Galaxy orbz, and tackle 'Minute to Win It' Art Challenges. Engineer wonders with LEGO STEM Construction, fold back into every corner with Origami Lucky Stars.

From as low as \$7.18**
Full fee \$71.18**

9 APR



Movie Magic

This autumn, for the first time in almost a decade, comedy icon Jack Black returns to his role as Po, the world's most unlikely kung fu master, with a hilarious, butt-kicking new chapter in DreamWorks Animation's beloved action-comedy franchise, Kung Fu Panda 4.

From as low as \$11.34**
Full fee \$113.40**

8 APR



Tote-ally Art!

It's time to bring some colour to the streets! Create wearable works of art with your very own DIY tote bag that you get to take home! In addition to crafting, amp up the fun with Best Jumping, showcasing your rhythm and coordination. Bust a move with Hip Hop Dance Moves and experience a tasty twist with Lemon Volcanoes.

From as low as \$7.18**
Full fee \$71.18**

10 APR

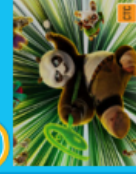


ArtBlast Galaxy

We are ready for lift-off! Launch your creativity into the stars and create unique patterns with Paint Pencils, dive into cosmos with Galaxy orbz, and tackle 'Minute to Win It' Art Challenges. Engineer wonders with LEGO STEM Construction, fold back into every corner with Origami Lucky Stars.

From as low as \$7.18**
Full fee \$71.18**

9 APR



Movie Magic

This autumn, for the first time in almost a decade, comedy icon Jack Black returns to his role as Po, the world's most unlikely kung fu master, with a hilarious, butt-kicking new chapter in DreamWorks Animation's beloved action-comedy franchise, Kung Fu Panda 4.

From as low as \$11.34**
Full fee \$113.40**

8 APR



Tote-ally Art!

It's time to bring some colour to the streets! Create wearable works of art with your very own DIY tote bag that you get to take home! In addition to crafting, amp up the fun with Best Jumping, showcasing your rhythm and coordination. Bust a move with Hip Hop Dance Moves and experience a tasty twist with Lemon Volcanoes.

From as low as \$7.18**
Full fee \$71.18**

10 APR

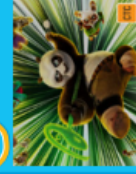


ArtBlast Galaxy

We are ready for lift-off! Launch your creativity into the stars and create unique patterns with Paint Pencils, dive into cosmos with Galaxy orbz, and tackle 'Minute to Win It' Art Challenges. Engineer wonders with LEGO STEM Construction, fold back into every corner with Origami Lucky Stars.

From as low as \$7.18**
Full fee \$71.18**

9 APR



Movie Magic

This autumn, for the first time in almost a decade, comedy icon Jack Black returns to his role as Po, the world's most unlikely kung fu master, with a hilarious, butt-kicking new chapter in DreamWorks Animation's beloved action-comedy franchise, Kung Fu Panda 4.

From as low as \$11.34**
Full fee \$113.40**

8 APR



Tote-ally Art!

It's time to bring some colour to the streets! Create wearable works of art with your very own DIY tote bag that you get to take home! In addition to crafting, amp up the fun with Best Jumping, showcasing your rhythm and coordination. Bust a move with Hip Hop Dance Moves and experience a tasty twist with Lemon Volcanoes.

From as low as \$7.18**
Full fee \$71.18**

10 APR

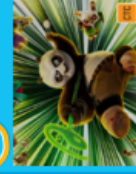


ArtBlast Galaxy

We are ready for lift-off! Launch your creativity into the stars and create unique patterns with Paint Pencils, dive into cosmos with Galaxy orbz, and tackle 'Minute to Win It' Art Challenges. Engineer wonders with LEGO STEM Construction, fold back into every corner with Origami Lucky Stars.

From as low as \$7.18**
Full fee \$71.18**

9 APR



Movie Magic

This autumn, for the first time in almost a decade, comedy icon Jack Black returns to his role as Po, the world's most unlikely kung fu master, with a hilarious, butt-kicking new chapter in DreamWorks Animation's beloved action-comedy franchise, Kung Fu Panda 4.

From as low as \$11.34**
Full fee \$113.40**

8 APR



Tote-ally Art!

It's time to bring some colour to the streets! Create wearable works of art with your very own DIY tote bag that you get to take home! In addition to crafting, amp up the fun with Best Jumping, showcasing your rhythm and coordination. Bust a move with Hip Hop Dance Moves and experience a tasty twist with Lemon Volcanoes.

From as low as \$7.18**
Full fee \$71.18**

10 APR

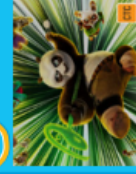


ArtBlast Galaxy

We are ready for lift-off! Launch your creativity into the stars and create unique patterns with Paint Pencils, dive into cosmos with Galaxy orbz, and tackle 'Minute to Win It' Art Challenges. Engineer wonders with LEGO STEM Construction, fold back into every corner with Origami Lucky Stars.

From as low as \$7.18**
Full fee \$71.18**

9 APR



Movie Magic

This autumn, for the first time in almost a decade, comedy icon Jack Black returns to his role as Po, the world's most unlikely kung fu master, with a hilarious, butt-kicking new chapter in DreamWorks Animation's beloved action-comedy franchise, Kung Fu Panda 4.

From as low as \$11.34**
Full fee \$113.40**

8 APR



Tote-ally Art!

It's time to bring some colour to the streets! Create wearable works of art with your very own DIY tote bag that you get to take home! In addition to crafting, amp up the fun with Best Jumping, showcasing your rhythm and coordination. Bust a move with Hip Hop Dance Moves and experience a tasty twist with Lemon Volcanoes.

From as low as \$7.18**
Full fee \$71.18**

10 APR

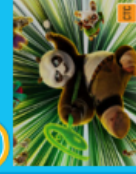


ArtBlast Galaxy

We are ready for lift-off! Launch your creativity into the stars and create unique patterns with Paint Pencils, dive into cosmos with Galaxy orbz, and tackle 'Minute to Win It' Art Challenges. Engineer wonders with LEGO STEM Construction, fold back into every corner with Origami Lucky Stars.

From as low as \$7.18**
Full fee \$71.18**

9 APR



Movie Magic

This autumn, for the first time in almost a decade, comedy icon Jack Black returns to his role as Po, the world's most unlikely kung fu master, with a hilarious, butt-kicking new chapter in DreamWorks Animation's beloved action-comedy franchise, Kung Fu Panda 4.

From as low as \$11.34**
Full fee \$113.40**

8 APR



Tote-ally Art!

It's time to bring some colour to the streets! Create wearable works of art with your very own DIY tote bag that you get to take home! In addition to crafting, amp up the fun with Best Jumping, showcasing your rhythm and coordination. Bust a move with Hip Hop Dance Moves and experience a tasty twist with Lemon Volcanoes.

From as low as \$7.18**
Full fee \$71.18**

10 APR

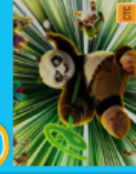


ArtBlast Galaxy

We are ready for lift-off! Launch your creativity into the stars and create unique patterns with Paint Pencils, dive into cosmos with Galaxy orbz, and tackle 'Minute to Win It' Art Challenges. Engineer wonders with LEGO STEM Construction, fold back into every corner with Origami Lucky Stars.

From as low as \$7.18**
Full fee \$71.18**

9 APR



Movie Magic

This autumn, for the first time in almost a decade, comedy icon Jack Black returns to his role as Po, the world's most unlikely kung fu master, with a hilarious, butt-kicking new chapter in DreamWorks Animation's beloved action-comedy franchise, Kung Fu Panda 4.

From as low as \$11.34**
Full fee \$113.40**

8 APR



Tote-ally Art!

It's time to bring some colour to the streets! Create wearable works of art with your very own DIY tote bag that you get to take home! In addition to crafting, amp up the fun with Best Jumping, showcasing your rhythm and coordination. Bust a move with Hip Hop Dance Moves and experience a tasty twist with Lemon Volcanoes.

From as low as \$7.18**
Full fee \$71.18**

10 APR

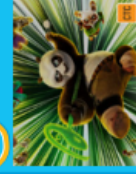


ArtBlast Galaxy

We are ready for lift-off! Launch your creativity into the stars and create unique patterns with Paint Pencils, dive into cosmos with Galaxy orbz, and tackle 'Minute to Win It' Art Challenges. Engineer wonders with LEGO STEM Construction, fold back into every corner with Origami Lucky Stars.

From as low as \$7.18**
Full fee \$71.18**

9 APR



Movie Magic

This autumn, for the first time in almost a decade, comedy icon Jack Black returns to his role as Po, the world's most unlikely kung fu master, with a hilarious, butt-kicking new chapter in DreamWorks Animation's beloved action-comedy franchise, Kung Fu Panda 4.

From as low as \$11.34**
Full fee \$113.40**

8 APR



Tote-ally Art!

It's time to bring some colour to the streets! Create wearable works of art with your very own DIY tote bag that you get to take home! In addition to crafting, amp up the fun with Best Jumping, showcasing your rhythm and coordination. Bust a move with Hip Hop Dance Moves and experience a tasty twist with Lemon Volcanoes.

From as low as \$7.18**
Full fee \$71.18**

10 APR

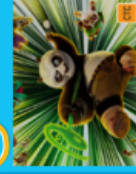


ArtBlast Galaxy

We are ready for lift-off! Launch your creativity into the stars and create unique patterns with Paint Pencils, dive into cosmos with Galaxy orbz, and tackle 'Minute to Win It' Art Challenges. Engineer wonders with LEGO STEM Construction, fold back into every corner with Origami Lucky Stars.

From as low as \$7.18**
Full fee \$71.18**

9 APR



Movie Magic

This autumn, for the first time in almost a decade, comedy icon Jack Black returns to his role as Po, the world's most unlikely kung fu master, with a hilarious, butt-kicking new chapter in DreamWorks Animation's beloved action-comedy franchise, Kung Fu Panda 4.

From as low as \$11.34**
Full fee \$113.40**

8 APR



Connect Up Program Worker

Hi Bell Park North PS families!

My name is Renae and I work in the Connect Up program provided by Meli (previously Bethany Community Support).

I am available to meet with families to provide free and confidential support for parents/carers/families who:

- *May be experiencing family challenges and need support*
- *Would like to build their parenting skills*
- *Are keen to find out about local support services available for families*
- *May need support with referrals to other services*

Please speak to the school Welfare Officer Rosalie Scott if you would like to access this service.



Bell Park North Community Hub is



A welcoming place where families of several and diverse backgrounds come together to share, connect and learn.
Free Registration and Children are welcome.

Toy Library, English classes, Play group, Excursions, Citizenship sessions, Art workshops and Zumba class.

**For more info please contact Community Hub leader
Azadeh Doosti on: 0422909487**



Bell Park North
Primary School



FREE

Bell Park Playgroup

Playgroup commencing **Wednesday 15 February**

Bethany Community Support runs playgroups as part of our Connect Up program, a local service that supports families to help their children thrive

Playgroups connect families to community and provide a place for parents to develop skills and for children to learn. They are also a great way to meet new people and socialise with other families.

For more information regarding Bell Park Playgroup please call **Renae** on **0490 669 510**

- Teach your child new skills
- Meet new families with young children
- Share information and ideas
- Fun activities for you to share with your preschool children

**Bell Park North Primary School
16 - 26 Barton Street Bell Park**

Wednesdays 9.30am - 11am

Bring a healthy snack and a water bottle for your child



Community Hub Leader
Azadeh Doosti
0422909487

bethany.org.au



Together We Achieve

Bell Park North
Primary School



Toy Library Free

Every Wednesday

9:30 am - 10:30 am

16-26 Barton St, Bell Park

**Join
Us**

For more information contact

Community Hub Leader

Azadeh Doosti

0422909487



Canteen News

Welcome back to our school community new and old.

Normal Canteen Days are **WEDNESDAY, THURSDAY, FRIDAY**

Looking forward to seeing all your smiling faces.

BREAKFAST CLUB

Breaky Club will now be available from **MONDAY** to **FRIDAY** each week

We are now asking for donations of

Margarine, Bread and Milo

CANTEEN

Frozen Yoghurt **NO** longer available.

JJs \$1.50

Vegie Crackers \$2.00

Snaps \$2.00

Order on-line via Compass.





Canteen Menu 2023



Canteen is open Wed, Thur & Fri

Brekky Program runs every day (Monday – Friday)

Place Name, Grade and Room number along with Food order on bag.
Money to be placed in bag and then order to be placed in the basket in classroom.

Thank you



Paper Bags	15c		
Tomato/BBQ Sauce	50c		
Sandwiches and Wraps		Hot Food	
Add 50c for rolls or toasting			
60Buttered Roll	\$2.70	Sausage Roll	\$3.80
Vegemite	\$2.90	Party Pies	\$1.60
Vegemite and Cheese	\$4.00	Hotdogs	\$4.40
Cheese	\$3.80	Hawaiian Pizza	\$4.40
Ham	\$3.80	Chicken Nuggets x 3	\$2.80
Ham 'n' cheese	\$4.40	Chicken Nuggets x 6	\$5.50
Ham, Cheese 'n'	\$4.90	Chicken Burger	\$5.50
Tomato		Chicken Burger 'n' Cheese	\$6.00
Egg 'n' Lettuce	\$5.50	Lasagne	\$5.50
Ham 'n' Salad	\$7.50	Spaghetti	\$5.50
Chicken 'n' Salad	\$7.50	Steamed Dims Sims	\$1.30
Salad (no meat)	\$6.00	Corn on the Cob	\$1.10
Salad contains: Cheese, beetroot, tomato, cucumber, carrot, lettuce, celery		Chicken Tender Wrap	\$6.00
Egg extra 50c		(Lettuce, tomato and choice of mayo or chilli sauce)	
Boiled egg	\$1.10	Hot chicken roll w/cheese	\$5.50
		Hot chicken roll w/gravy	\$6.00
Drinks		Halal Items	
Water – Large	\$1.30	Hot dogs	\$4.40
Water - Small	\$1.00	Nuggets	3 for \$2.80 6 for \$5.50
		Salad Tubs	
		Small Salad Tub	\$6.60
		Fruit Salad	\$7.70

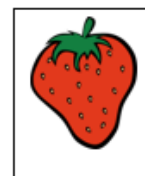


Snacks

BBQ Snaps = \$2.00
Vege Snaps = \$2.00
Butter Popcorn = \$1.50
Original Popcorn = \$1.20
JJ's = \$1.50
Petzels = \$1.00
Assorted muffins = \$1.00
Piklets & sprinkles = 50 cents

Fruit Snacks

Watermelon = 50 cents
** Rockmelon = 50 cents)
** Honeydew = 50 cents)
** Grape = 10 cents) ** Seasonal fruit **
** Strawberry = 10 cents)
** Kiwi Fruit = 10 cents)
Kabana = 10 cents
Cheese = 10 cents
Wafer Biscuits = 20 cents



Prices as of Monday 10th July 2023